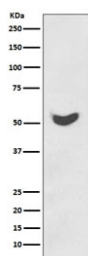


## KRT7 Antibody / Cytokeratin 7 [clone GEC-11] (RQ5260)

Catalog No.	Formulation	Size
RQ5260	Antibody in PBS with 0.02% sodium azide, 50% glycerol and 0.4-0.5mg/ml BSA	100 ul

[Bulk quote request](#)

Availability	1-2 weeks
Species Reactivity	Human
Format	Purified
Host	Rabbit
Clonality	Rabbit Monoclonal
Isotype	Rabbit IgG
Clone Name	GEC-11
Purity	Affinity purified
UniProt	P08729
Applications	Western Blot : 1:500-1:1000
Limitations	This KRT7 antibody is available for research use only.



Western blot testing of human HeLa cell lysate with KRT7 antibody. Predicted molecular weight ~51 kDa.

### Description

The protein encoded by the KRT7 gene is a member of the keratin gene family. The type II cytokeratins consist of basic or neutral proteins which are arranged in pairs of heterotypic keratin chains coexpressed during differentiation of simple and stratified epithelial tissues. This type II cytokeratin is specifically expressed in the simple epithelia lining the cavities of the internal organs and in the gland ducts and blood vessels. [RefSeq]

## Application Notes

Optimal dilution of the KRT7 antibody should be determined by the researcher.

## Immunogen

A synthetic peptide specific to human Cytokeratin 7 / KRT7 was used as the immunogen for the KRT7 antibody.

## Storage

Store the KRT7 antibody at -20oC.