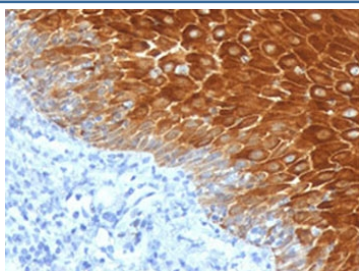


## KRT6 Antibody / Cytokeratin 6 [clone CTKN6-1] (V3863)

Catalog No.	Formulation	Size
V3863-100UG	0.2 mg/ml in 1X PBS with 0.1 mg/ml BSA (US sourced) and 0.05% sodium azide	100 ug
V3863-20UG	0.2 mg/ml in 1X PBS with 0.1 mg/ml BSA (US sourced) and 0.05% sodium azide	20 ug
V3863SAF-100UG	1 mg/ml in 1X PBS; BSA free, sodium azide free	100 ug

[Bulk quote request](#)

<b>Availability</b>	1-3 business days
<b>Species Reactivity</b>	Human
<b>Format</b>	Purified
<b>Clonality</b>	Monoclonal (mouse origin)
<b>Isotype</b>	Mouse IgG2a, kappa
<b>Clone Name</b>	CTKN6-1
<b>Purity</b>	Protein G affinity chromatography
<b>UniProt</b>	P02538
<b>Localization</b>	Cytoplasmic
<b>Applications</b>	Immunohistochemistry (FFPE) : 1-2ug/ml for 30 min at RT
<b>Limitations</b>	This KRT6 antibody is available for research use only.



IHC testing of FFPE human basal cell carcinoma with KRT6 antibody (clone CTKN6-1). Required HIER: boil tissue sections in pH6, 10mM citrate buffer, for 10-20 min followed by cooling at RT for 20 min.

## Description

Epidermis-specific type I keratin involved in wound healing. Involved in the activation of follicular keratinocytes after wounding, while it does not play a major role in keratinocyte proliferation or migration. Participates in the regulation of

epithelial migration by inhibiting the activity of SRC during wound repair. [UniProt]

## Application Notes

The stated application concentrations are suggested starting points. Titration of the KRT6 antibody may be required due to differences in protocols and secondary/substrate sensitivity.

## Immunogen

Recombinant human KRT6A protein was used as the immunogen for the KRT6 antibody.

## Storage

Store the KRT6 antibody at 2-8oC (with azide) or aliquot and store at -20oC or colder (without azide).