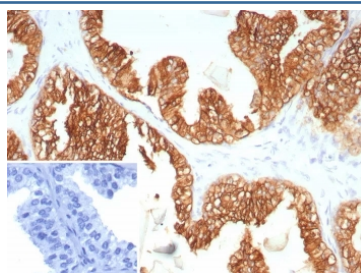


KRT5/6 Antibody / Cytokeratin 5/6 [clone KRT5.6/9103] (V5479)

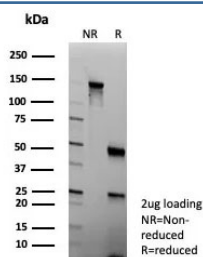
Catalog No.	Formulation	Size
V5479-100UG	0.2 mg/ml in 1X PBS with 0.1 mg/ml BSA (US sourced), 0.05% sodium azide	100 ug
V5479-20UG	0.2 mg/ml in 1X PBS with 0.1 mg/ml BSA (US sourced), 0.05% sodium azide	20 ug
V5479SAF-100UG	1 mg/ml in 1X PBS; BSA free, sodium azide free	100 ug

[Bulk quote request](#)

Availability	1-3 business days
Species Reactivity	Human
Format	Purified
Host	Mouse
Clonality	Monoclonal (mouse origin)
Isotype	Mouse IgG1, kappa
Clone Name	KRT5.6/9103
Purity	Protein A/G affinity
UniProt	P13647, P02538
Localization	Cytoplasm
Applications	Immunohistochemistry (FFPE) : 1-2ug/ml
Limitations	This KRT5/6 antibody is available for research use only.



IHC staining of FFPE human prostate carcinoma tissue with KRT5/6 antibody (clone KRT5.6/9104). Inset: PBS used in place of primary Ab (secondary Ab negative control).
HIER: boil tissue sections in pH 9 10mM Tris with 1mM EDTA for 20 min and allow to cool before testing.



SDS-PAGE analysis of purified KRT5/6 antibody (clone KRT5.6/9104) as confirmation of integrity and purity.

Description

Cytokeratin 5 is a basic protein that is closely related to cytokeratin 6. They share similar tissue distribution and are found in various proportions in many non-keratinizing stratified squamous epithelia eg. tongue mucosa, as well as in basal epithelia of trachea, basal cells of epidermis, hair follicles, sebaceous and sweat glands of skin, luminal cells of the mammary gland, basal cells of prostate, urothelium, vagina and endocervical mucosa. Cytokeratins 5 and 6 are also expressed in basal cell epitheliomas, squamous cell carcinomas of skin, tongue, epiglottis and of the rectal-anal region. Cytokeratin 5&6 Ab is a useful aid for classification of epithelioid mesotheliomas.

Application Notes

Optimal dilution of the KRT5/6 antibody should be determined by the researcher.

Immunogen

A recombinant protein fragment common to human Cytokeratin 5 and Cytokeratin 6 proteins was used as the immunogen for the KRT5/6 antibody.

Storage

Aliquot the KRT5/6 antibody and store frozen at -20oC or colder. Avoid repeated freeze-thaw cycles.