

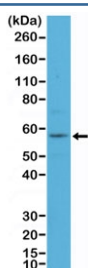
## KRT4 Antibody / Cytokeratin 4 [clone RM355] (R20377)

Catalog No.	Formulation	Size
R20377-0.1ML	Antibody in PBS with 50% glycerol, 1% BSA and 0.09% sodium azide	100 ul

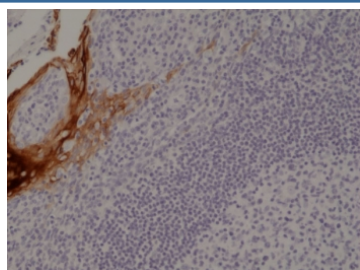
Recombinant **RABBIT MONOCLONAL**

[Bulk quote request](#)

Availability	1-3 business days
Species Reactivity	Human
Format	Purified
Host	Rabbit
Clonality	Recombinant Rabbit Monoclonal
Isotype	Rabbit IgG
Clone Name	RM355
Purity	Protein A purified from animal origin-free supernatant
UniProt	P19013
Localization	Cell membrane, cytoplasm, nucleus
Applications	Immunohistochemistry (FFPE) : 1:500-1:1000 Western Blot : 1:100-1:1000
Limitations	This recombinant KRT4 antibody is available for research use only.



Western blot testing of human A431 cell lysate with recombinant KRT4 antibody at 1:100 dilution.



IHC staining of FFPE human tonsil tissue with recombinant KRT4 antibody at 1:1000.

## Description

This antibody reacts human CK-4 (Cytokeratin-4).

## Application Notes

The stated application concentrations are suggested starting points. Titration of the recombinant KRT4 antibody may be required due to differences in protocols and secondary/substrate sensitivity.

## Immunogen

A peptide corresponding to the C-terminus of human CK-4 (Cytokeratin-4) was used as the immunogen for the recombinant KRT4 antibody.

## Storage

Store the recombinant KRT4 antibody at -20oC.