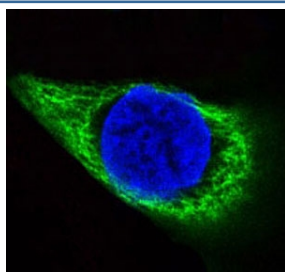


KRT14 Antibody / Cytokeratin 14 / CK14 [clone FEF-11] (RQ5076)

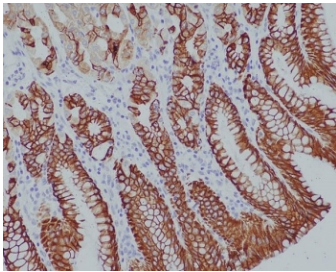
Catalog No.	Formulation	Size
RQ5076	Antibody in PBS with 0.02% sodium azide, 50% glycerol and 0.4-0.5mg/ml BSA	100 ul

[Bulk quote request](#)

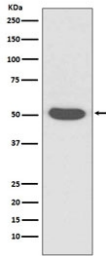
Availability	1-2 weeks
Species Reactivity	Human
Format	Purified
Host	Rabbit
Clonality	Rabbit Monoclonal
Isotype	Rabbit IgG
Clone Name	FEF-11
Purity	Affinity purified
UniProt	P02533
Applications	Western Blot : 1:1000-1:2000 Immunohistochemistry (FFPE) : 1:50-1:200 Immunofluorescence/Immunocytochemistry : 1:50-1:200
Limitations	This KRT14 antibody is available for research use only.



IF/ICC staining of human HACAT cells with KRT14 antibody (green) and DAPI nuclear stain (blue).



IHC staining of FFPE human stomach tissue with KRT14 antibody. HIER: boil tissue sections in pH6, 10mM citrate buffer, for 10-20 min and allow to cool before testing.



Western blot testing of human A431 cell lysate with Cytokeratin 14 antibody. Predicted molecular weight ~53 kDa.

Description

Cytokeratin 14, a type I keratin, is usually found as a heterotetramer with two keratin 5 molecules, a type II keratin. Together they form the cytoskeleton of epithelial cells. [RefSeq]

Application Notes

Optimal dilution of the KRT14 antibody should be determined by the researcher.

Immunogen

A synthetic peptide specific to human Cytokeratin 14 / KRT14 was used as the immunogen for the KRT14 antibody.

Storage

Store the KRT14 antibody at -20oC.