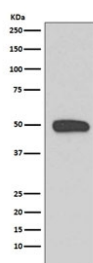


KRT13 Antibody / Cytokeratin 13 [clone GAC-11] (RQ5409)

Catalog No.	Formulation	Size
RQ5409	Antibody in PBS with 0.02% sodium azide, 50% glycerol and 0.4-0.5mg/ml BSA	100 ul

[Bulk quote request](#)

Availability	1-2 weeks
Species Reactivity	Human
Format	Purified
Host	Rabbit
Clonality	Rabbit Monoclonal
Isotype	Rabbit IgG
Clone Name	GAC-11
Purity	Affinity purified
UniProt	P13646
Applications	Western Blot : 1:50000-1:100000
Limitations	This KRT13 antibody is available for research use only.



Western blot testing of human A431 cell lysate with KRT13 antibody. Predicted molecular weight ~50 kDa.

Description

The protein encoded by the KRT13 gene is a member of the keratin gene family. The keratins are intermediate filament proteins responsible for the structural integrity of epithelial cells and are subdivided into cytokeratins and hair keratins. Most of the type I cytokeratins consist of acidic proteins which are arranged in pairs of heterotypic keratin chains. This type I cytokeratin is paired with keratin 4 and expressed in the suprabasal layers of non-cornified stratified epithelia. Mutations in this gene and keratin 4 have been associated with the autosomal dominant disorder White Sponge Nevus. The type I cytokeratins are clustered in a region of chromosome 17q21.2. [RefSeq]

Application Notes

Optimal dilution of the KRT13 antibody should be determined by the researcher.

Immunogen

A synthetic peptide specific to human Cytokeratin 13 / KRT13 was used as the immunogen for the KRT13 antibody.

Storage

Store the KRT13 antibody at -20oC.