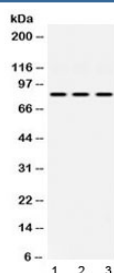


## KRIT1 Antibody / CCM1 (R32542)

Catalog No.	Formulation	Size
R32542	0.5mg/ml if reconstituted with 0.2ml sterile DI water	100 ug

**Bulk quote request**

<b>Availability</b>	1-3 business days
<b>Species Reactivity</b>	Human, Mouse, Rat
<b>Format</b>	Antigen affinity purified
<b>Clonality</b>	Polyclonal (rabbit origin)
<b>Isotype</b>	Rabbit IgG
<b>Purity</b>	Antigen affinity
<b>Buffer</b>	Lyophilized from 1X PBS with 2.5% BSA and 0.025% sodium azide
<b>UniProt</b>	O00522
<b>Applications</b>	Western Blot : 0.5-1ug/ml
<b>Limitations</b>	This KRIT1 antibody is available for research use only.



Western blot testing of 1) rat heart, 2) mouse NIH 3T3 and 3) human HeLa lysate with KRIT1 antibody at 0.5ug/ml. Predicted/observed molecular weight: ~84 kDa.

## Description

Krev interaction trapped protein 1 is a protein that in humans is encoded by the CCM1 gene. This gene encodes a protein containing four ankyrin repeats, a band 4.1/ezrin/radixin/moesin (FERM) domain, and multiple NPXY sequences. The encoded protein is localized in the nucleus and cytoplasm. It binds to integrin cytoplasmic domain-associated protein-1 alpha (ICAP1alpha), and plays a critical role in beta1-integrin-mediated cell proliferation. It associates with junction proteins and RAS-related protein 1A (Rap1A), which requires the encoded protein for maintaining the integrity of endothelial junctions. It is also a microtubule-associated protein and may play a role in microtubule targeting. Mutations in this gene result in cerebral cavernous malformations. Multiple alternatively spliced transcript variants have been found for this gene.

## Application Notes

Differences in protocols and secondary/substrate sensitivity may require the KRIT1 antibody to be titrated for optimal performance.

## Immunogen

Amino acids 703-736 (ENKMSFIVHTKQAGLVVKLLMKLNGQLMPTERNs) from the human protein were used as the immunogen for the KRIT1 antibody.

## Storage

After reconstitution, the KRIT1 antibody can be stored for up to one month at 4°C. For long-term, aliquot and store at -20°C. Avoid repeated freezing and thawing.