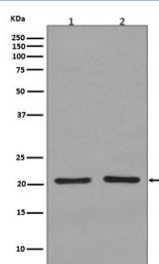


## KRAS/HRAS/NRAS Antibody [clone EBE-14] (RQ4864)

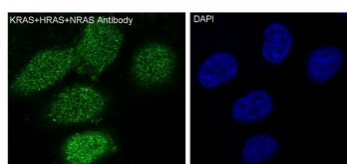
Catalog No.	Formulation	Size
RQ4864	Antibody in PBS with 0.02% sodium azide, 50% glycerol and 0.4-0.5mg/ml BSA	100 ul

[Bulk quote request](#)

Availability	1-2 weeks
Species Reactivity	Human, Rat
Format	Purified
Clonality	Rabbit Monoclonal
Isotype	Rabbit IgG
Clone Name	EBE-14
Purity	Affinity purified
UniProt	P01111
Applications	Western Blot : 1:500-1:2000 Immunofluorescence/Immunocytochemistry : 1:50-1:200
Limitations	This KRAS/HRAS/NRAS antibody is available for research use only.



Western blot testing of 1) human 293T and 2) rat C6 cell lysate with KRAS/HRAS/NRAS antibody. Predicted molecular weight ~21 kDa.



IF/ICC staining of human HeLa cells with KRAS/HRAS/NRAS antibody (green) and DAPI nuclear stain (blue).

## Application Notes

Optimal dilution of the KRAS/HRAS/NRAS antibody should be determined by the researcher.

## Immunogen

A synthetic peptide common to human KRAS/HRAS/NRAS was used as the immunogen for the KRAS/HRAS/NRAS antibody.

## Storage

Store the KRAS/HRAS/NRAS antibody at -20oC.