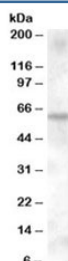


## KPNA6 Antibody (R36089)

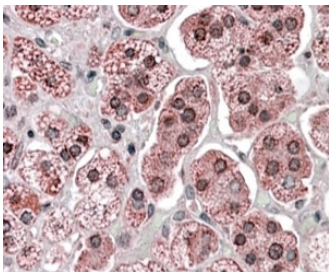
| Catalog No.  | Formulation   | Size   |
|--------------|---|--------|
| R36089-100UG | 0.5 mg/ml in 1X TBS, pH7.3, with 0.5% BSA (US sourced) and 0.02% sodium azide | 100 ug |

[Bulk quote request](#)

|                      |   |
|----------------------|---|
| Availability         | 1-3 business days   |
| Species Reactivity   | Human   |
| Predicted Reactivity | Cow, Dog, Mouse, Pig, Rat   |
| Format               | Antigen affinity purified   |
| Host                 | Goat  |
| Clonality            | Polyclonal (goat origin)  |
| Isotype              | Goat Ig   |
| Purity               | Antigen affinity  |
| Gene ID              | 23633   |
| Applications         | Western Blot : 0.1-0.3ug/ml<br>Immunohistochemistry (FFPE) : 3-6ug/ml<br>ELISA (peptide) LOD : 1:128000 |
| Limitations          | This KPNA6 antibody is available for research use only.   |



Western blot testing of human muscle lysate with KPNA6 antibody at 0.1ug/ml. Predicted molecular weight: ~60kDa.



IHC staining of FFPE human adrenal gland with KPNA6 antibody at 4ug/ml. HIER: steamed with pH6 citrate buffer, AP-staining.

## Description

Additional name(s) for this target protein: Karyopherin alpha 6; importin alpha 7

## Application Notes

Optimal dilution of the KPNA6 antibody should be determined by the researcher.

## Immunogen

Amino acids STTGESVITREMVE were used as the immunogen for this KPNA6 antibody.

## Storage

Aliquot and store the KPNA6 antibody at -20oC.