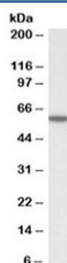


KPNA3 Antibody (R33584)

| Catalog No. | Formulation | Size |
|--------------|---|--------|
| R33584-100UG | 0.5 mg/ml in 1X TBS, pH7.3, with 0.5% BSA (US sourced) and 0.02% sodium azide | 100 ug |

[Bulk quote request](#)

| | |
|----------------------|---|
| Availability | 1-3 business days |
| Species Reactivity | Human |
| Predicted Reactivity | Cow, Dog, Mouse, Rat |
| Format | Antigen affinity purified |
| Host | Goat |
| Clonality | Polyclonal (goat origin) |
| Isotype | Goat Ig |
| Purity | Antigen affinity |
| Gene ID | 3839 |
| Localization | Cytoplasmic, nuclear |
| Applications | Western Blot : 0.1-0.3ug/ml ELISA (peptide) LOD : 1:128000 |
| Limitations | This KPNA3 antibody is available for research use only. |



Western blot testing of human HeLa cell lysate with KPNA3 antibody at 0.1ug/ml.
Predicted molecular weight ~58 kDa.

Description

Additional name(s) for this target protein: Karyopherin alpha 3; IPOA4; importin alpha 4

Application Notes

Optimal dilution of the KPNA3 antibody should be determined by the researcher.

Immunogen

Amino acids DPTANLQTKEFNF were used as the immunogen for this KPNA3 antibody.

Storage

Aliquot and store the KPNA3 antibody at -20oC.