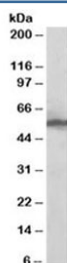


KPNA2 Antibody (R35508)

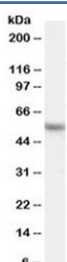
Catalog No.	Formulation	Size
R35508-100UG	0.5 mg/ml in 1X TBS, pH7.3, with 0.5% BSA (US sourced) and 0.02% sodium azide	100 ug

[Bulk quote request](#)

Availability	1-3 business days
Species Reactivity	Human
Predicted Reactivity	Mouse, Rat, Dog
Format	Antigen affinity purified
Host	Goat
Clonality	Polyclonal (goat origin)
Isotype	Goat Ig
Purity	Antigen affinity
Gene ID	3838
Applications	Western Blot : 0.1-0.3ug/ml ELISA (peptide) LOD : 1:32000
Limitations	This KPNA2 antibody is available for research use only.



Western blot testing of HeLa lysate with KPNA2 antibody at 0.1ug/ml. Predicted molecular weight: ~58 kDa.



Western blot testing of HeLa lysate with KPNA2 antibody at 0.03ug/ml. Predicted molecular weight: ~58 kDa.

Description

Additional name(s) for this target protein: Karyopherin alpha 2

Application Notes

Optimal dilution of the KPNA2 antibody should be determined by the researcher.

Immunogen

Amino acids QVQDGAPGTFNF were used as the immunogen for this KPNA2 antibody.

Storage

Aliquot and store the KPNA2 antibody at -20oC.