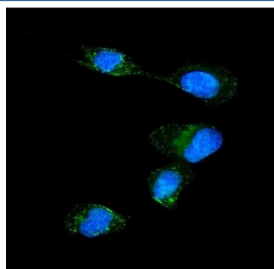


KPNA1 Antibody / Importin alpha 5 / SRP1 (RQ5824)

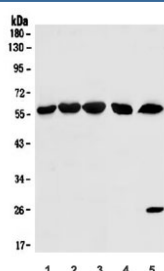
Catalog No.	Formulation	Size
RQ5824	0.5mg/ml if reconstituted with 0.2ml sterile DI water	100 ug

Bulk quote request

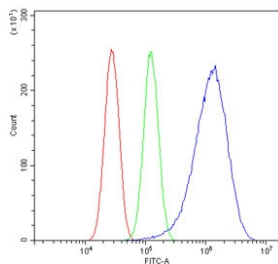
Availability	1-3 business days
Species Reactivity	Human, Mouse, Rat
Format	Antigen affinity purified
Clonality	Polyclonal (rabbit origin)
Isotype	Rabbit IgG
Purity	Affinity purified
Buffer	Lyophilized from 1X PBS with 2% Trehalose and 0.025% sodium azide
UniProt	P52294
Localization	Nuclear, cytoplasmic
Applications	Western Blot : 0.5-1ug/ml Immunofluorescence : 2-4ug/ml Flow Cytometry : 1-3ug/million cells
Limitations	This KPNA1 antibody is available for research use only.



Immunofluorescent staining of FFPE human U-2 OS cells with KPNA1 antibody (green) and DAPI nuclear stain (blue). HIER: steam section in pH6 citrate buffer for 20 min.



Western blot testing of 1) human HL-60, 2) Caco-2, 3) human PC-3, 4) rat heart and 5) mouse heart lysate with KPNA1 antibody. Predicted molecular weight ~60 kDa.



Flow cytometry testing of human U-87 MG cells with KPNA1 antibody at 1ug/million cells (blocked with goat sera); Red=cells alone, Green=isotype control, Blue= KPNA1 antibody.

Description

Importin subunit alpha 5 is a protein that in humans is encoded by the KPNA1 gene. The transport of molecules between the nucleus and the cytoplasm in eukaryotic cells is mediated by the nuclear pore complex (NPC), which consists of 60-100 proteins. Small molecules (up to 70 kD) can pass through the nuclear pore by nonselective diffusion while larger molecules are transported by an active process. The protein encoded by this gene belongs to the importin alpha family, and is involved in nuclear protein import. This protein interacts with the recombination activating gene 1 (RAG1) protein and is a putative substrate of the RAG1 ubiquitin ligase. Alternative splicing results in multiple transcript variants.

Application Notes

Optimal dilution of the KPNA1 antibody should be determined by the researcher.

Immunogen

Amino acids VITSDMIEMIFSKSPEQQLSATQKFRKL from the human protein were used as the immunogen for the KPNA1 antibody.

Storage

After reconstitution, the KPNA1 antibody can be stored for up to one month at 4oC. For long-term, aliquot and store at -20oC. Avoid repeated freezing and thawing.