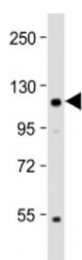


## Klotho Antibody (F54138)

| Catalog No.   | Formulation                                | Size    |
|---------------|--|---------|
| F54138-0.2ML  | In 1X PBS, pH 7.4, with 0.09% sodium azide | 0.2 ml  |
| F54138-0.05ML | In 1X PBS, pH 7.4, with 0.09% sodium azide | 0.05 ml |

[Bulk quote request](#)

|                             |  |
|-----------------------------|--|
| <b>Availability</b>         | 1-3 business days  |
| <b>Species Reactivity</b>   | Mouse  |
| <b>Predicted Reactivity</b> | Human  |
| <b>Format</b>               | Antigen affinity purified                                |
| <b>Clonality</b>            | Polyclonal (rabbit origin)                               |
| <b>Isotype</b>              | Rabbit Ig  |
| <b>Purity</b>               | Antigen affinity   |
| <b>UniProt</b>              | Q9UEF7   |
| <b>Applications</b>         | Western Blot : 1:2000                                    |
| <b>Limitations</b>          | This Klotho antibody is available for research use only. |



Western blot testing of Klotho antibody at 1:2000 + mouse brain lysate. Predicted molecular weight ~116 kDa, observed at 120-135 kDa.

## Description

May have weak glycosidase activity towards glucuronylated steroids. However, it lacks essential active site Glu residues at positions 239 and 872, suggesting it may be inactive as a glycosidase in vivo. May be involved in the regulation of calcium and phosphorus homeostasis by inhibiting the synthesis of active vitamin D (By similarity). Essential factor for the specific interaction between FGF23 and FGFR1 (By similarity). [UniProt]

## Application Notes

The stated application concentrations are suggested starting points. Titration of the Klotho antibody may be required due

to differences in protocols and secondary/substrate sensitivity.

## **Immunogen**

Recombinant human Klotho was used as the immunogen for the Klotho antibody.

## **Storage**

Aliquot the Klotho antibody and store frozen at -20oC or colder. Avoid repeated freeze-thaw cycles.