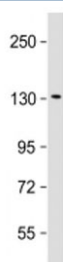


Klotho Antibody (Center Region) (F54137)

| Catalog No. | Formulation | Size |
|---------------|--|---------|
| F54137-0.2ML | In 1X PBS, pH 7.4, with 0.09% sodium azide | 0.2 ml |
| F54137-0.05ML | In 1X PBS, pH 7.4, with 0.09% sodium azide | 0.05 ml |

[Bulk quote request](#)

| | |
|-----------------------------|--|
| Availability | 1-3 business days |
| Species Reactivity | Human |
| Predicted Reactivity | Mouse |
| Format | Antigen affinity purified |
| Clonality | Polyclonal (rabbit origin) |
| Isotype | Rabbit Ig |
| Purity | Antigen affinity |
| UniProt | Q9UEF7 |
| Applications | Western Blot : 1:2000 |
| Limitations | This Klotho antibody is available for research use only. |



Western blot testing of Klotho antibody at 1:2000 + human HepG2 cell lysate. Predicted molecular weight ~116 kDa, observed at 120-135 kDa.

Description

May have weak glycosidase activity towards glucuronylated steroids. However, it lacks essential active site Glu residues at positions 239 and 872, suggesting it may be inactive as a glycosidase in vivo. May be involved in the regulation of calcium and phosphorus homeostasis by inhibiting the synthesis of active vitamin D (By similarity). Essential factor for the specific interaction between FGF23 and FGFR1 (By similarity). [UniProt]

Application Notes

The stated application concentrations are suggested starting points. Titration of the Klotho antibody may be required due

to differences in protocols and secondary/substrate sensitivity.

Immunogen

A portion of amino acids 402-436 from human Klotho was used as the immunogen for the Klotho antibody.

Storage

Aliquot the Klotho antibody and store frozen at -20oC or colder. Avoid repeated freeze-thaw cycles.