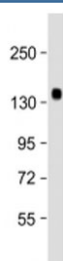


Klotho Antibody (Center Region) (F54136)

Catalog No.	Formulation	Size
F54136-0.2ML	In 1X PBS, pH 7.4, with 0.09% sodium azide	0.2 ml
F54136-0.05ML	In 1X PBS, pH 7.4, with 0.09% sodium azide	0.05 ml

[Bulk quote request](#)

Availability	1-3 business days
Species Reactivity	Human
Format	Antigen affinity purified
Clonality	Polyclonal (rabbit origin)
Isotype	Rabbit Ig
Purity	Antigen affinity
UniProt	Q9UEF7
Applications	Western Blot : 1:2000
Limitations	This Klotho antibody is available for research use only.



Western blot testing of Klotho antibody at 1:2000 + human kidney lysate. Predicted molecular weight ~116 kDa, observed at 120-135 kDa.

Description

May have weak glycosidase activity towards glucuronylated steroids. However, it lacks essential active site Glu residues at positions 239 and 872, suggesting it may be inactive as a glycosidase in vivo. May be involved in the regulation of calcium and phosphorus homeostasis by inhibiting the synthesis of active vitamin D (By similarity). Essential factor for the specific interaction between FGF23 and FGFR1 (By similarity). [UniProt]

Application Notes

The stated application concentrations are suggested starting points. Titration of the Klotho antibody may be required due to differences in protocols and secondary/substrate sensitivity.

Immunogen

A portion of amino acids 331-365 from human Klotho was used as the immunogen for the Klotho antibody.

Storage

Aliquot the Klotho antibody and store frozen at -20oC or colder. Avoid repeated freeze-thaw cycles.