

KLK6 Antibody / Kallikrein 6 (F54850)

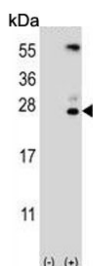
Catalog No.	Formulation	Size
F54850-0.4ML	In 1X PBS, pH 7.4, with 0.09% sodium azide	0.4 ml
F54850-0.08ML	In 1X PBS, pH 7.4, with 0.09% sodium azide	0.08 ml

[Bulk quote request](#)

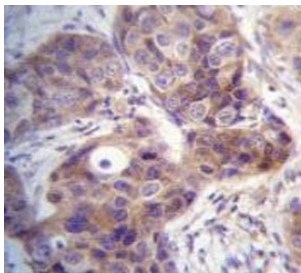
Availability	1-3 business days
Species Reactivity	Human
Format	Purified
Clonality	Polyclonal (rabbit origin)
Isotype	Rabbit Ig
Purity	Purified
UniProt	Q92876
Localization	Cytoplasmic, nuclear, secreted
Applications	Western Blot : 1:1000-1:2000 Flow Cytometry : 1:10-1:50 (1x10e6 cells) Immunohistochemistry (FFPE) : 1:10-1:50
Limitations	This KLK6 antibody is available for research use only.



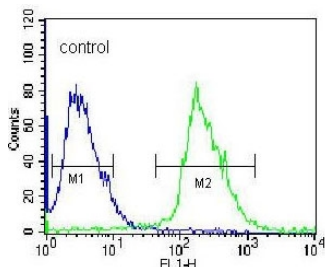
Western blot testing of human lung tissue lysate with KLK6 antibody. Predicted molecular weight ~27 kDa.



Western blot testing of 1) non-transfected and 2) transfected 293 cell lysate with KLK6 antibody.



IHC testing of FFPE human breast carcinoma tissue with KLK6 antibody. HIER: steam section in pH6 citrate buffer for 20 min and allow to cool prior to staining.



Flow cytometry testing of human HEK293 cells with KLK6 antibody; Blue=isotype control, Green= KLK6 antibody.

Description

Kallikreins are a subgroup of serine proteases having diverse physiological functions. Growing evidence suggests that many kallikreins are implicated in carcinogenesis and some have potential as novel cancer and other disease biomarkers. The KLK6 enzyme is regulated by steroid hormones. In tissue culture, the enzyme has been found to generate amyloidogenic fragments from the amyloid precursor protein, suggesting a potential for involvement in Alzheimer's disease.

Application Notes

The stated application concentrations are suggested starting points. Titration of the KLK6 antibody may be required due to differences in protocols and secondary/substrate sensitivity.

Immunogen

A portion of amino acids 1-30 from the human protein was used as the immunogen for the KLK6 antibody.

Storage

Aliquot the KLK6 antibody and store frozen at -20oC or colder. Avoid repeated freeze-thaw cycles.