

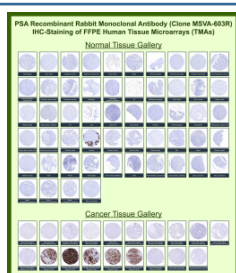
KLK3 Antibody / Kallikrein related peptidase 3 [clone MSVA-603R] (V6089)

| Catalog No. | Formulation | Size |
|-------------|---|--------|
| V6089-100UG | Antibody in 1X PBS with 0.05% BSA, 0.05% sodium azide | 100 ug |
| V6089-20UG | Antibody in 1X PBS with 0.05% BSA, 0.05% sodium azide | 20 ug |

Recombinant **RABBIT MONOCLONAL**

[Bulk quote request](#)

| | |
|--------------------|---|
| Species Reactivity | Human |
| Format | Purified |
| Host | Rabbit |
| Clonality | Recombinant Rabbit Monoclonal |
| Isotype | Rabbit IgG, kappa |
| Clone Name | MSVA-603R |
| UniProt | P07288 |
| Localization | Secreted |
| Applications | Immunohistochemistry (FFPE) : 1-2ug/ml |
| Limitations | This KLK3/Kallikrein related peptidase 3 antibody is available for research use only. |



Prostate-specific antigen Rabbit Recombinant Monoclonal Antibody (MSVA-603R) tested on many normal and cancer tissues. The immunohistochemistry staining in these tissues aligns with the expression data in Human Protein Atlas.

Manual Protocol: Freshly cut sections should be used (less than 10 days between cutting and staining). Heat-induced antigen retrieval for 5 minutes in an autoclave at 121°C in pH 7.8 Target Retrieval Solution buffer. Apply the antibody at a dilution of 1:150 at 37°C for 60 minutes. Visualization of bound antibody by the EnVision Kit (Dako, Agilent) according to the manufacturer's directions.

Application Notes

- Optimal dilution of the KLK3/Kallikrein related peptidase 3 antibody should be determined by the researcher.
- This KLK3/Kallikrein related peptidase 3 antibody is recombinantly produced by expression in human HEK293 cells.

Immunogen

A recombinant fragment (around amino acids 150-250) of human KLK3 protein (exact sequence is proprietary) was used as the immunogen for the KLK3/Kallikrein related peptidase 3 antibody.

Storage

KLK3/Kallikrein related peptidase 3 antibody with sodium azide - store at 2 to 8°C; antibody without sodium azide - store at -20 to -80°C.