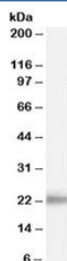


KLK2 Antibody (R34463)

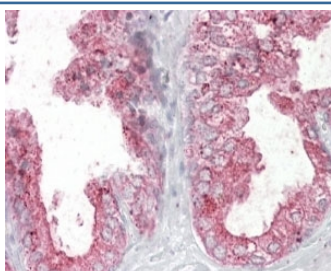
Catalog No.	Formulation	Size
R34463-100UG	0.5 mg/ml in 1X TBS, pH7.3, with 0.5% BSA (US sourced) and 0.02% sodium azide	100 ug

[Bulk quote request](#)

Availability	1-3 business days
Species Reactivity	Human
Format	Antigen affinity purified
Host	Goat
Clonality	Polyclonal (goat origin)
Isotype	Goat Ig
Purity	Antigen affinity
Gene ID	3817
Applications	Western Blot : 0.1-0.3ug/ml Immunohistochemistry (FFPE) : 2.5-5ug/ml ELISA (peptide) LOD : 1:16000
Limitations	This KLK2 antibody is available for research use only.



Western blot testing of human prostate lysate with KLK2 antibody at 0.1ug/ml. Predicted molecular weight: ~25kDa.



IHC staining of FFPE human prostate with KLK2 antibody at 4ug/ml. HIER: steamed with pH6 citrate buffer, AP-staining.

Description

Additional name(s) for this target protein: Kallikrein 2

Application Notes

Optimal dilution of the KLK2 antibody should be determined by the researcher.

Immunogen

Amino acids KHQSLRPDEDSSHD were used as the immunogen for this KLK2 antibody.

Storage

Aliquot and store the KLK2 antibody at -20oC.