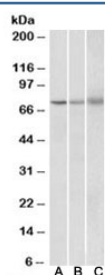


KLHL6 Antibody / Kelch-like protein 6 (R35890)

Catalog No.	Formulation	Size
R35890-100UG	0.5 mg/ml in 1X TBS, pH7.3, with 0.5% BSA (US sourced) and 0.02% sodium azide	100 ug

[Bulk quote request](#)

Availability	1-3 business days
Species Reactivity	Human, Mouse
Predicted Reactivity	Cow, Dog, Rat
Format	Antigen affinity purified
Clonality	Polyclonal (goat origin)
Isotype	Goat Ig
Purity	Antigen affinity
Gene ID	89857
Applications	Western Blot : 1-3ug/ml ELISA (peptide) LOD : 1:16000
Limitations	This KLHL6 antibody is available for research use only.



Western blot testing of human [A], mouse [B] and rat [C] spleen lysate with KLHL6 antibody at 2ug/ml. Predicted molecular weight: ~71 kDa.

Description

Additional name(s) for this target protein: Kelch-like 6

Application Notes

Optimal dilution of the KLHL6 antibody should be determined by the researcher.

Immunogen

Amino acids SERTKPRMHEFQSE were used as the immunogen for this KLHL6 antibody.

Storage

Aliquot and store the KLHL6 antibody at -20oC.