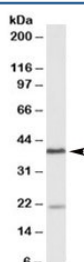


## KLHDC8B Antibody (R36194)

Catalog No.	Formulation	Size
R36194-100UG	0.5 mg/ml in 1X TBS, pH7.3, with 0.5% BSA (US sourced) and 0.02% sodium azide	100 ug

[Bulk quote request](#)

Availability	1-3 business days
Species Reactivity	Human, Mouse
Predicted Reactivity	Cow, Dog, Rat
Format	Antigen affinity purified
Clonality	Polyclonal (goat origin)
Isotype	Goat Ig
Purity	Antigen affinity
Gene ID	200942
Applications	Western Blot : 0.5-2ug/ml ELISA (peptide) LOD : 1:64000
Limitations	This KLHDC8B antibody is available for research use only.



Western blot testing of Daudi lysate with KLHDC8B antibody at 0.5ug/ml. The expected ~38kDa band and the additional ~22kDa band are both blocked by the immunizing peptide.

## Description

Additional name(s) for this target protein: Kelch domain containing 8B

## Application Notes

Optimal dilution of the KLHDC8B antibody should be determined by the researcher.

## Immunogen

Amino acids TKLPRSLRMRDK were used as the immunogen for this KLHDC8B antibody.

## **Storage**

Aliquot and store the KLHDC8B antibody at -20oC.