

KLF9 Antibody (F54706)

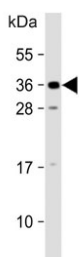
Catalog No.	Formulation	Size
F54706-0.4ML	In 1X PBS, pH 7.4, with 0.09% sodium azide	0.4 ml
F54706-0.08ML	In 1X PBS, pH 7.4, with 0.09% sodium azide	0.08 ml

[Bulk quote request](#)

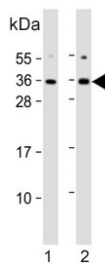
Availability	1-3 business days
Species Reactivity	Human, Rat
Format	Purified
Clonality	Polyclonal (rabbit origin)
Isotype	Rabbit Ig
Purity	Antigen affinity purified
UniProt	Q13886
Applications	Western Blot : 1:500-1:2000 Immunofluorescence : 1:25
Limitations	This KLF9 antibody is available for research use only.



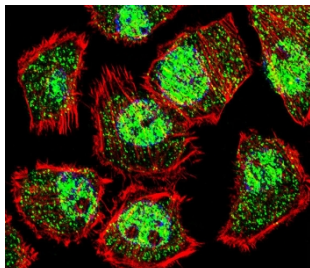
Western blot testing of human WiDr cell lysate with KLF9 antibody. Expected molecular weight: 27-35 kDa.



Western blot testing of human U-87 MG cell lysate with KLF9 antibody. Expected molecular weight: 27-35 kDa.



Western blot testing of 1) rat C6 and 2) human U-87 MG cell lysate with KLF9 antibody. Expected molecular weight: 27-35 kDa.



Immunofluorescent staining of fixed and permeabilized human U-251 MG cells with KLF9 antibody (green), DAPI nuclear stain (blue) and anti-Actin (red).

Description

Krueppel-like factor 9, the protein encoded by the KLF9 gene, is a transcription factor that binds to GC box elements located in the promoter. Binding of the encoded protein to a single GC box inhibits mRNA expression while binding to tandemly repeated GC box elements activates transcription.

Application Notes

The stated application concentrations are suggested starting points. Titration of the KLF9 antibody may be required due to differences in protocols and secondary/substrate sensitivity.

Immunogen

A portion of amino acids 29-57 from the human protein was used as the immunogen for the KLF9 antibody.

Storage

Aliquot the KLF9 antibody and store frozen at -20°C or colder. Avoid repeated freeze-thaw cycles.