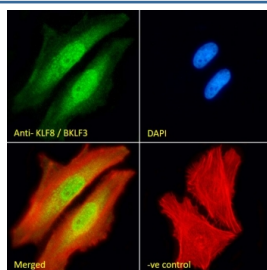


KLF8 Antibody (R36324)

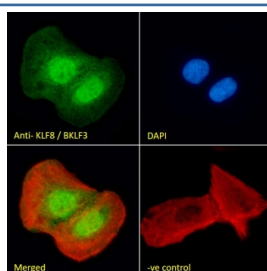
| Catalog No. | Formulation | Size |
|--------------|---|--------|
| R36324-100UG | 0.5 mg/ml in 1X TBS, pH7.3, with 0.5% BSA (US sourced) and 0.02% sodium azide | 100 ug |

[Bulk quote request](#)

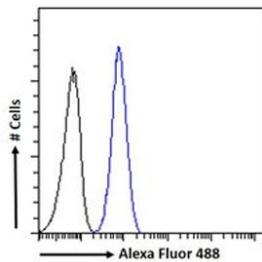
| | |
|--------------------|--|
| Availability | 1-3 business days |
| Species Reactivity | Human |
| Format | Antigen affinity purified |
| Host | Goat |
| Clonality | Polyclonal (goat origin) |
| Isotype | Goat Ig |
| Purity | Antigen affinity |
| Gene ID | 11279 |
| Applications | Immunofluorescence : 10ug/ml Flow Cytometry : 1ug/million cells in 0.1ml ELISA (peptide) LOD : 1:32000 |
| Limitations | This KLF8 antibody is available for research use only. |



Immunofluorescent staining of fixed and permeabilized human HeLa cells with KLF8 antibody (green) at 10ug/ml, Phalloidin (red) and DAPI nuclear stain (blue).



Immunofluorescent staining of fixed and permeabilized human U-2 OS cells with KLF8 antibody (green) at 10ug/ml, Phalloidin (red) and DAPI nuclear stain (blue).



FACS testing of fixed and permeabilized human HeLa cells with KLF8 antibody (blue) at 10ug/ml and naive goat Ig (black).

Description

Additional name(s) for this target protein: Kruppel-like factor 8

Application Notes

Optimal dilution of the KLF8 antibody should be determined by the researcher.

1. This KLF8 antibody is specific for isoforms 1 and 2.

Immunogen

Amino acids VDMDKLINNLEVQ were used as the immunogen for this KLF8 antibody.

Storage

Aliquot and store the KLF8 antibody at -20oC.

References (2)