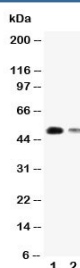


## KLF8 Antibody (R30990)

Catalog No.	Formulation	Size
R30990	0.5mg/ml if reconstituted with 0.2ml sterile DI water	100 ug

**Bulk quote request**

<b>Availability</b>	1-3 business days
<b>Species Reactivity</b>	Human
<b>Format</b>	Antigen affinity purified
<b>Clonality</b>	Polyclonal (rabbit origin)
<b>Isotype</b>	Rabbit IgG
<b>Purity</b>	Antigen affinity
<b>Buffer</b>	Lyophilized from 1X PBS with 2.5% BSA and 0.025% sodium azide/thimerosal
<b>UniProt</b>	O95600
<b>Applications</b>	Western Blot : 0.5-1ug/ml
<b>Limitations</b>	This KLF8 antibody is available for research use only.



Western blot testing of KLF8 antibody and Lane 1: SMMC-7721; 2: 293T cell lysate.  
Predicted size ~40KD, Observed size ~50KD

## Description

Kruppel-like factor 8 is a protein that in humans is encoded by the KLF8 gene. It is also named as ZNF741, or BKLF3. Kruppel-like factor proteins all contain a characteristic C-terminal DNA-binding domain containing three Kruppel-like zinc fingers, and they all recognize CACCC and GC boxes present in promoters and enhancers. The International Radiation Hybrid Mapping Consortium mapped the gene to the X chromosome (WI-18614). Suske et al.(2005) stated that the human gene maps to chromosome Xp11.21, and the mouse gene to chromosome XF3. van Vliet et al.(2000) identified a cDNA encoding KLF8, also called ZNF741. Expression of KLF8 or only its zinc fingers showed that the fingers could bind to a CACCC box. Sequence analysis predicted that the 359-amino acid protein contains a nuclear localization signal upstream of the zinc fingers, a valine-rich hydrophobic stretch, and a pro-val-asp-leu-ser(PVDLS) motif. Yeast 2-hybrid

and GST pull-down analysis demonstrated that CTBP2 interacts with KLF8 through the PVDLS motif.

## Application Notes

The stated application concentrations are suggested starting amounts. Titration of the KLF8 antibody may be required due to differences in protocols and secondary/substrate sensitivity.

## Immunogen

An amino acid sequence from the N-terminus of human Kruppel-like factor 8 (MVDMDKLINNLEVQLNSE) was used as the immunogen for this KLF8 antibody.

## Storage

After reconstitution, the KLF8 antibody can be stored for up to one month at 4oC. For long-term, aliquot and store at -20oC. Avoid repeated freezing and thawing.