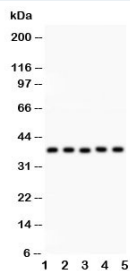


KLF6 Antibody (R31644)

Catalog No.	Formulation	Size
R31644	0.5mg/ml if reconstituted with 0.2ml sterile DI water	100 ug

[Bulk quote request](#)

Availability	1-3 business days
Species Reactivity	Human, Rat
Format	Antigen affinity purified
Host	Rabbit
Clonality	Polyclonal (rabbit origin)
Isotype	Rabbit IgG
Purity	Antigen affinity
Buffer	Lyophilized from 1X PBS with 2.5% BSA and 0.025% sodium azide
Gene ID	1316
Applications	Western Blot : 0.5-1ug/ml
Limitations	This KLF6 antibody is available for research use only.



Western blot testing of KLF6 antibody and Lane 1: human placenta; 2: rat testis; 3: (h) HeLa; 4: (h) HEPG2; 5: mouse HEPA lysate. Expected size: 32~40KD



Western blot testing of KLF6 antibody and recombinant human protein (0.5ng)

Description

Kruppel-like factor 6 is a protein that in humans is encoded by the KLF6 gene. It is a tumor suppressor gene which is located on 10p15.1. This gene encodes a nuclear protein that has three zinc fingers at the end of its C-terminal domain, a serine/threonine-rich central region, and an acidic domain lying within the N-terminal region. The zinc fingers of this protein are responsible for the specific DNA binding with the guanine-rich core promoter elements. The central region might be involved in activation or posttranslational regulatory pathways, and the acidic N-terminal domain might play an important role in the process of transcriptional activation. It is capable of activating transcription approximately 4-fold either on homologous or heterologous promoters. The DNA binding and transcriptional activity of this protein, in conjunction with its expression pattern, suggests that this protein may participate in the regulation and/or maintenance of the basal expression of pregnancy-specific glycoprotein genes and possibly other TATA box-less genes.

Application Notes

The stated application concentrations are suggested starting amounts. Titration of the KLF6 antibody may be required due to differences in protocols and secondary/substrate sensitivity.

Immunogen

Human partial recombinant protein (AA 38-205) was used as the immunogen for this KLF6 antibody.

Storage

After reconstitution, the KLF6 antibody can be stored for up to one month at 4°C. For long-term, aliquot and store at -20°C. Avoid repeated freezing and thawing.