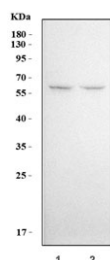


KLF5 Antibody / Krueppel-like factor 5 (R30989)

Catalog No.	Formulation	Size
R30989	0.5mg/ml if reconstituted with 0.2ml sterile DI water	100 ug

Bulk quote request

Availability	1-3 business days
Species Reactivity	Human
Format	Antigen affinity purified
Clonality	Polyclonal (rabbit origin)
Isotype	Rabbit IgG
Purity	Antigen affinity
Buffer	Lyophilized from 1X PBS with 2.5% BSA and 0.025% sodium azide/thimerosal
UniProt	Q13887
Applications	Western Blot : 0.5-1ug/ml
Limitations	This KLF5 antibody is available for research use only.



Western blot testing of human 1) HeLa and 2) A549 cell lysate with KLF5 antibody. Expected molecular weight: 41-51 kDa (two isoforms).

Description

Kruppel-like factor 5 is a protein that in humans is encoded by the KLF5 gene. It is also known as BTEB2. This gene encodes a member of the Kruppel-like factor subfamily of zinc finger proteins. Suske et al.(2005) stated that the human gene maps to chromosome 13q21.33, and the mouse gene to chromosome 14E2.1. Sogawa et al.(1993) isolated a cDNA encoding KLF5. The predicted protein contains 3 consecutive zinc finger motifs near the C terminus. The zinc finger domains were 59% and 64% identical to those of Sp1 (189906) and BTEB1, respectively. Both KLF5 and Sp1 have a short basic region preceding the zinc finger motifs that may play an auxiliary role in DNA binding. The N-terminal region of KLF5 is proline rich. Recombinant KLF5 protein and Sp1 showed very similar DNA-binding specificity in vitro. When expressed in mammalian cells, KLF5 activated the transcription of a reporter gene fused to a GC box-containing

promoter. Sogawa et al.(1993) also identified the rat homolog.

Application Notes

The stated application concentrations are suggested starting amounts. Titration of the KLF5 antibody may be required due to differences in protocols and secondary/substrate sensitivity.

Immunogen

An amino acid sequence from the middle region of human Kruppel-like factor 5 (HKKYRRDSASVVDQFFTD) was used as the immunogen for this KLF5 antibody.

Storage

After reconstitution, the KLF5 antibody can be stored for up to one month at 4oC. For long-term, aliquot and store at -20oC. Avoid repeated freezing and thawing.