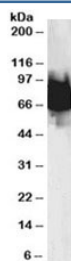


KLF4 Antibody (R33195)

Catalog No.	Formulation	Size
R33195-100UG	0.5 mg/ml in 1X TBS, pH7.3, with 0.5% BSA (US sourced) and 0.02% sodium azide	100 ug

[Bulk quote request](#)

Availability	1-3 business days
Species Reactivity	Human
Predicted Reactivity	Cow, Mouse, Rat
Format	Antigen affinity purified
Host	Goat
Clonality	Polyclonal (goat origin)
Isotype	Goat Ig
Purity	Antigen affinity
Gene ID	9314
Applications	Western Blot : 0.1-1 ug/ml ELISA (peptide) LOD : 1:64000
Limitations	This KLF4 antibody is available for research use only.



Western blot testing of human duodenum lysate with KLF4 antibody at 0.1ug/ml.
Predicted molecular weight: 50-60 kDa + possible ~75 kDa (phosphorylated form).

Description

Additional name(s) for this target protein: Kruppel-like factor 4

Application Notes

Optimal dilution of the KLF4 antibody should be determined by the researcher.

Immunogen

Amino acids AVSDALLPSFST were used as the immunogen for this KLF4 antibody.

Storage

Aliquot and store the KLF4 antibody at -20oC.