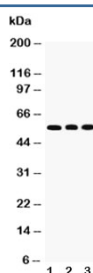


## KLF4 Antibody (R31335)

Catalog No.	Formulation	Size
R31335	0.5mg/ml if reconstituted with 0.2ml sterile DI water	100 ug

[Bulk quote request](#)

Availability	1-3 business days
Species Reactivity	Human, Mouse, Rat
Format	Antigen affinity purified
Host	Rabbit
Clonality	Polyclonal (rabbit origin)
Isotype	Rabbit Ig
Purity	Antigen affinity
Buffer	Lyophilized from 1X PBS with 2.5% BSA and 0.025% sodium azide/thimerosal
UniProt	O43474
Applications	Western Blot : 0.5-1ug/ml
Limitations	This KLF4 antibody is available for research use only.



Western blot testing of KLF4 antibody and Lane 1: HeLa; 2: A549; 3: U2OS cell lysate.  
Predicted molecular weight: 50-60 kDa + possible ~75 kDa (phosphorylated form).

## Description

Kruppel-like factor 4, also known as EZF or GKLF, is a protein that in humans is encoded by the KLF4 gene. This gene is mapped to 9q31.2 and encodes a member of the Kruppel family of transcription factors. It plays an important role in maintaining embryonic stem cells, and in preventing their differentiation. KLF4 is required for establishing the barrier function of the skin and for postnatal maturation and maintenance of the ocular surface. The protein is also involved in the differentiation of epithelial cells and may function in skeletal and kidney development.

## Application Notes

The stated application concentrations are suggested starting points. Titration of the KLF4 antibody may be required due to differences in protocols and secondary/substrate sensitivity.

## Immunogen

An amino acid sequence from the N-terminus of human KLF4 (RRETEEFNDLLDLDFI) was used as the immunogen for this KLF4 antibody (100% homologous in human, mouse and rat).

## Storage

After reconstitution, the KLF4 antibody can be stored for up to one month at 4°C. For long-term, aliquot and store at -20°C. Avoid repeated freezing and thawing.