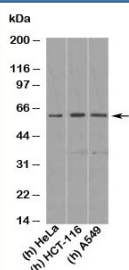


## KLF4 Antibody (N1004)

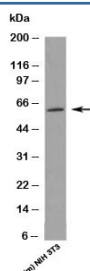
Catalog No.	Formulation	Size
N1004-100UG	0.5 mg/ml in 1X PBS with 0.1 mg/ml BSA (US sourced), 0.05% sodium azide	100 ug
N1004-25UG	0.5 mg/ml in 1X PBS with 0.1 mg/ml BSA (US sourced), 0.05% sodium azide	25 ug

[Bulk quote request](#)

<b>Species Reactivity</b>	Human, Mouse, Rat
<b>Format</b>	Purified
<b>Host</b>	Rabbit
<b>Clonality</b>	Polyclonal (rabbit origin)
<b>Isotype</b>	Rabbit IgG
<b>Purity</b>	Protein A Affinity Chromatography
<b>Buffer</b>	1X PBS, pH 7.4
<b>Gene ID</b>	9314
<b>Applications</b>	Western Blot : 1-3ug/ml
<b>Limitations</b>	This <b>KLF4 antibody</b> is available for research use only.



Western blot testing of human samples with KLF4 antibody at 1 ug/ml. Predicted molecular weight: 50-60 kDa + possible ~75 kDa (phosphorylated form).



Western blot testing of mouse samples with KLF4 antibody at 1 ug/ml.

## Description

Krueppel-like factor family members are involved in growth regulation and a wide range of developmental processes. KLF4 is highly expressed in epithelial tissues including skin and stomach/intestine. Studies have shown that KLF4 can function as both an oncogene, upregulating hSSC, and a tumor suppressor, down-regulating colorectal cancer. KLF4 is involved in the differentiation of epithelial cells and may also function in skeletal and kidney development.

## Application Notes

Provided assay concentrations are suggestions only, KLF4 antibody titration may be required for optimal results.

## Immunogen

A recombinant protein fragment from N-terminal human KLF4 was used as the immunogen for this antibody.

## Storage

Aliquot the KLF4 antibody and store frozen at -20oC or colder to avoid repeated freeze-thaw cycles.

## Alternate Names

Krueppel-like factor 4, Epithelial zinc finger protein, EZF, Gut-enriched krueppel-like factor, GKLF