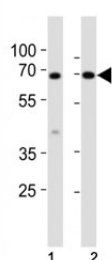


Klf4 Antibody (F53108)

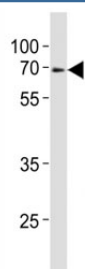
Catalog No.	Formulation	Size
F53108-0.4ML	In 1X PBS, pH 7.4, with 0.09% sodium azide	0.4 ml
F53108-0.08ML	In 1X PBS, pH 7.4, with 0.09% sodium azide	0.08 ml

[Bulk quote request](#)

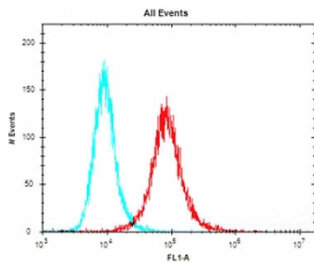
Availability	1-3 business days
Species Reactivity	Mouse
Format	Antigen affinity purified
Host	Rabbit
Clonality	Polyclonal (rabbit origin)
Isotype	Rabbit Ig
Purity	Antigen affinity
UniProt	Q60793
Applications	Western Blot : 1:1000 Flow Cytometry : 1:25
Limitations	This Klf4 antibody is available for research use only.



Western blot analysis of lysate from mouse (1) small intestine and (2) testis tissue lysate using Klf4 antibody at 1:1000. Predicted molecular weight: 50-60 kDa + possible ~75 kDa (phosphorylated form).



Western blot analysis of lysate from mouse heart tissue lysate using Klf4 antibody at 1:1000.



Flow cytometry testing of fixed and permeabilized mouse NIH/3T3 cells with Klf4 antibody; Blue=isotype control, Red= Klf4 antibody.

Description

Transcription factor; can act both as activator and as repressor. Binds the 5'-CACCC-3' core sequence. Binds to the promoter region of its own gene and can activate its own transcription. Regulates the expression of key transcription factors during embryonic development. Plays an important role in maintaining embryonic stem cells, and in preventing their differentiation. Required for establishing the barrier function of the skin and for postnatal maturation and maintenance of the ocular surface. Involved in the differentiation of epithelial cells and may also function in skeletal and kidney development. Contributes to the down-regulation of p53/TP53 transcription (By similarity).

Application Notes

Titration of the Klf4 antibody may be required due to differences in protocols and secondary/substrate sensitivity.

Immunogen

This Klf4 antibody was produced from a rabbit immunized with a KLH conjugated synthetic peptide between 321-354 amino acids from the central region of mouse Klf4.

Storage

Aliquot the Klf4 antibody and store frozen at -20oC or colder. Avoid repeated freeze-thaw cycles.