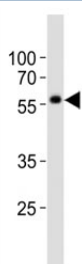


## KLF4 Antibody (F52999)

| Catalog No.   | Formulation                                | Size    |
|---------------|--|---------|
| F52999-0.4ML  | In 1X PBS, pH 7.4, with 0.09% sodium azide | 0.4 ml  |
| F52999-0.08ML | In 1X PBS, pH 7.4, with 0.09% sodium azide | 0.08 ml |

[Bulk quote request](#)

|                           |  |
|---------------------------|--|
| <b>Availability</b>       | 1-3 business days                                      |
| <b>Species Reactivity</b> | Human  |
| <b>Format</b>             | Antigen affinity purified                              |
| <b>Host</b>               | Rabbit   |
| <b>Clonality</b>          | Polyclonal (rabbit origin)                             |
| <b>Isotype</b>            | Rabbit Ig  |
| <b>Purity</b>             | Antigen affinity                                       |
| <b>UniProt</b>            | O43474   |
| <b>Applications</b>       | Western Blot : 1:1000                                  |
| <b>Limitations</b>        | This KLF4 antibody is available for research use only. |



Western blot analysis of lysate from NCCIT cell line using KLF4 antibody at 1:1000.  
Predicted molecular weight: 50-60 kDa + possible ~75 kDa (phosphorylated form).

## Description

Transcription factor; can act both as activator and as repressor. Binds the 5'-CACCC-3' core sequence. Binds to the promoter region of its own gene and can activate its own transcription. Regulates the expression of key transcription factors during embryonic development. Plays an important role in maintaining embryonic stem cells, and in preventing their differentiation. Required for establishing the barrier function of the skin and for postnatal maturation and maintenance of the ocular surface. Involved in the differentiation of epithelial cells and may also function in skeletal and kidney development. Contributes to the down-regulation of p53/TP53 transcription.

## Application Notes

Titration of the KLF4 antibody may be required due to differences in protocols and secondary/substrate sensitivity.

## Immunogen

This KLF4 antibody was produced from a rabbit immunized with a KLH conjugated synthetic peptide between 408-450 amino acids from the C-terminal region of human KLF4.

## Storage

Aliquot the KLF4 antibody and store frozen at -20oC or colder. Avoid repeated freeze-thaw cycles.