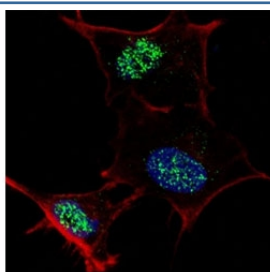


KLF4 Antibody (F48148)

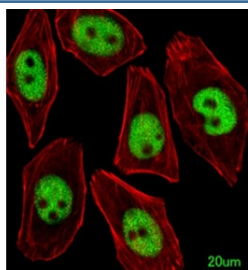
Catalog No.	Formulation	Size
F48148-0.4ML	In 1X PBS, pH 7.4, with 0.09% sodium azide	0.4 ml
F48148-0.08ML	In 1X PBS, pH 7.4, with 0.09% sodium azide	0.08 ml

[Bulk quote request](#)

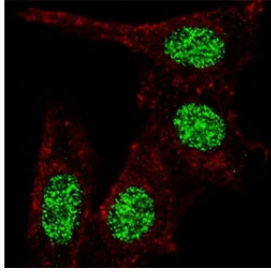
Availability	1-3 business days
Species Reactivity	Human
Predicted Reactivity	Mouse, Rat
Format	Antigen affinity purified
Host	Rabbit
Clonality	Polyclonal (rabbit origin)
Isotype	Rabbit Ig
Purity	Antigen affinity
UniProt	O43474
Applications	Western Blot : 1:1000 Immunofluorescence : 1:10-1:50
Limitations	This KLF4 antibody is available for research use only.



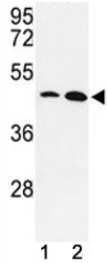
Fluorescent confocal image of SY5Y cells stained with KLF4 antibody at 1:100. Note the highly specific localization of immunoreactivity to the nuclei.



Immunofluorescent analysis of U251 cells using KLF4 antibody; Ab was diluted at 1:25 dilution. Alexa Fluor 488-conjugated goat anti-rabbit IgG was used as the secondary Ab (green). Cytoplasmic actin was counterstained with Dylight Fluor 554 (red) conjugated Phalloidin (red).



Fluorescent confocal image of HeLa cells stained with KLF4 antibody at 1:100. Note the highly specific localization of the immunoreactivity to the nuclei but not the cytoplasm.



Western blot analysis of KLF4 antibody and MDA-MB231, NCI-H460 lysate. Predicted molecular weight: 50-60 kDa + possible ~75 kDa (phosphorylated form).

Description

Kruppel-like factor 4 (KLF4) is a transcription factor involved in both proliferation and differentiation in the colon.

Application Notes

Titration of the KLF4 antibody may be required due to differences in protocols and secondary/substrate sensitivity.

Immunogen

A portion of amino acids 481-504 from the human protein was used as the immunogen for this KLF4 antibody.

Storage

Aliquot the KLF4 antibody and store frozen at -20°C or colder. Avoid repeated freeze-thaw cycles.