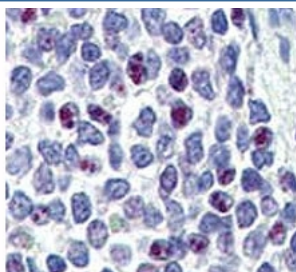


KLF4 Antibody (F48145)

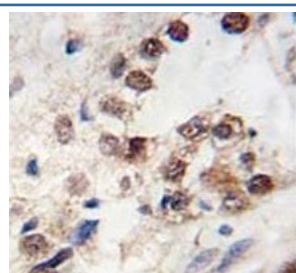
Catalog No.	Formulation	Size
F48145-0.4ML	In 1X PBS, pH 7.4, with 0.09% sodium azide	0.4 ml
F48145-0.08ML	In 1X PBS, pH 7.4, with 0.09% sodium azide	0.08 ml

[Bulk quote request](#)

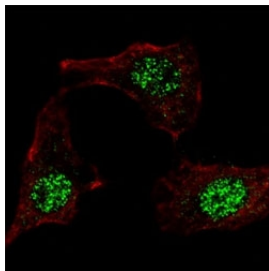
Availability	1-3 business days
Species Reactivity	Human, Mouse
Format	Purified
Host	Rabbit
Clonality	Polyclonal (rabbit origin)
Isotype	Rabbit Ig
Purity	Purified
UniProt	O43474
Applications	Western Blot : 1:1000 Immunofluorescence : 1:10-1:50 IHC (Paraffin) : 1:10-1:50
Limitations	This KLF4 antibody is available for research use only.



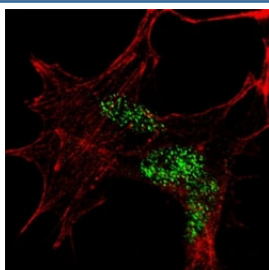
IHC analysis of FFPE human spleen tissue stained with KLF4 antibody



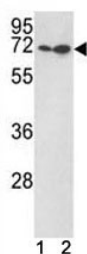
IHC testing of KLF4 antibody and FFPE human prostate carcinoma



IF staining of HeLa cells with KLF4 antibody at 1:100, response is localized to the nuclei.



Fluorescent confocal image of SY5Y cells stained with KLF4 antibody at 1:100. KLF4 immunoreactivity is localized to the nuclei.



KLF4 antibody western blot with (1) Jurkat, (2) 293 lysate. Predicted molecular weight: 50-60 kDa + possible ~75 kDa (phosphorylated form).

Description

Transcription factor; can act both as activator and as repressor. Binds the 5'-CACCC-3' core sequence. Binds to the promoter region of its own gene and can activate its own transcription. Regulates the expression of key transcription factors during embryonic development. Plays an important role in maintaining embryonic stem cells, and in preventing their differentiation. Required for establishing the barrier function of the skin and for postnatal maturation and maintenance of the ocular surface. Involved in the differentiation of epithelial cells and may also function in skeletal and kidney development. Contributes to the down-regulation of p53/TP53 transcription.

Application Notes

The stated application concentrations are suggested starting amounts. Titration of the KLF4 antibody may be required due to differences in protocols and secondary/substrate sensitivity.

Immunogen

A portion of amino acids 69-101 from the human protein was used as the immunogen for this KLF4 antibody.

Storage

Store at 4°C for up to one month. For long term, aliquot the KLF4 antibody and store frozen at -20°C or colder. Avoid repeated freeze-thaw cycles.

