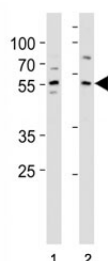


## KLF4 Antibody (F41813)

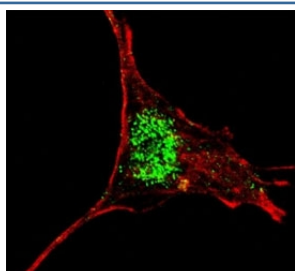
Catalog No.	Formulation	Size
F41813-0.4ML	In 1X PBS, pH 7.4, with 0.09% sodium azide	0.4 ml
F41813-0.08ML	In 1X PBS, pH 7.4, with 0.09% sodium azide	0.08 ml

[Bulk quote request](#)

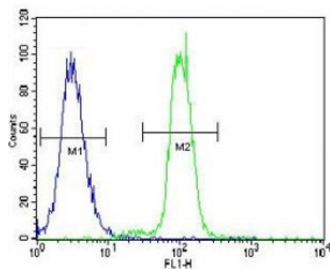
<b>Availability</b>	1-3 business days
<b>Species Reactivity</b>	Human
<b>Format</b>	Purified
<b>Host</b>	Rabbit
<b>Clonality</b>	Polyclonal (rabbit origin)
<b>Isotype</b>	Rabbit Ig
<b>Purity</b>	Purified
<b>UniProt</b>	O43474
<b>Applications</b>	Western Blot : 1:1000 Immunofluorescence : 1:10-1:50 Flow Cytometry : 1:10-1:50
<b>Limitations</b>	This KLF4 antibody is available for research use only.



KLF4 antibody western blot analysis in (1) A431 and (2) MCF-7 lysate. Predicted molecular weight: 50-60 kDa + possible ~75 kDa (phosphorylated form).



Fluorescent confocal image of SY5Y cells stained with KLF4 antibody at 1:200. KLF4 immunoreactivity is localized very specifically to the nuclei of the SY5Y cells.



KLF4 antibody flow cytometric analysis of K562 cells (right histogram) compared to a negative control (left histogram). FITC-conjugated goat-anti-rabbit secondary Ab was used for the analysis.

## Description

KLF4 is a transcription factor which acts as both an activator and repressor. Binds the CACCC core sequence. Binds to multiple sites in the 5'-flanking region of its own gene and can activate its own transcription. Required for establishing the barrier function of the skin and for postnatal maturation and maintenance of the ocular surface. Involved in the differentiation of epithelial cells and may also function in skeletal and kidney development.

## Application Notes

Titration of the KLF4 antibody may be required due to differences in protocols and secondary/substrate sensitivity.

## Immunogen

A portion of amino acids 394-421 from the human protein was used as the immunogen for this KLF4 antibody.

## Storage

Aliquot the KLF4 antibody and store frozen at -20oC or colder. Avoid repeated freeze-thaw cycles.