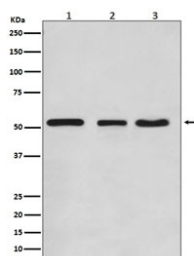


## KLF4 Antibody [clone AODA-11] (RQ4737)

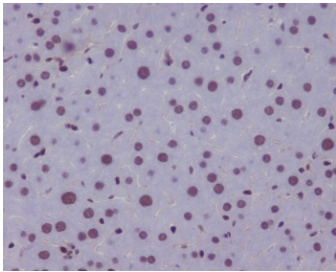
Catalog No.	Formulation	Size
RQ4737	Antibody in PBS with 0.02% sodium azide, 50% glycerol and 0.4-0.5mg/ml BSA	100 ul

[Bulk quote request](#)

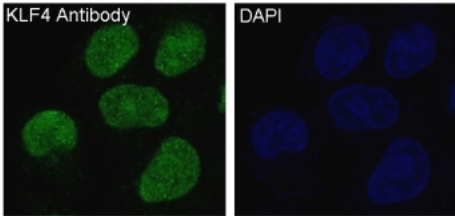
<b>Availability</b>	1-2 weeks
<b>Species Reactivity</b>	Human, Mouse, Rat
<b>Format</b>	Purified
<b>Clonality</b>	Rabbit Monoclonal
<b>Isotype</b>	Rabbit IgG
<b>Clone Name</b>	AODA-11
<b>Purity</b>	Affinity purified
<b>UniProt</b>	O43474
<b>Localization</b>	Nuclear
<b>Applications</b>	Western Blot : 1:500-1:2000 Immunohistochemistry (FFPE) : 1:50-1:200 Immunofluorescence (FFPE) : 1:50-1:200
<b>Limitations</b>	This KLF4 antibody is available for research use only.



Western blot testing of 1) human HeLa, 2) mouse NIH3T3 and 3) rat C6 cell lysate with KLF4 antibody. Predicted molecular weight: 50-60 kDa + possible ~75 kDa (phosphorylated form).



IHC staining of FFPE mouse liver tissue with KLF4 antibody. HIER: boil tissue sections in pH8 EDTA for 20 min and allow to cool before testing.



Immunofluorescent staining of FFPE human HeLa cells with KLF4 antibody (green) and DAPI nuclear stain (blue). HIER: steam section in pH6 citrate buffer for 20 min.

## Description

The KLF4 gene encodes a protein that belongs to the Kruppel family of transcription factors. The encoded zinc finger protein is required for normal development of the barrier function of skin. The encoded protein is thought to control the G1-to-S transition of the cell cycle following DNA damage by mediating the tumor suppressor gene p53. [RefSeq]

## Application Notes

Optimal dilution of the KLF4 antibody should be determined by the researcher.

## Immunogen

A synthetic peptide specific to human KLF4 was used as the immunogen for the KLF4 antibody.

## Storage

Store the KLF4 antibody at -20oC.