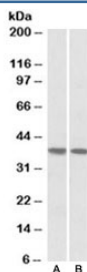


## KLF2 Antibody (R33149)

| Catalog No.  | Formulation   | Size   |
|--------------|---|--------|
| R33149-100UG | 0.5 mg/ml in 1X TBS, pH7.3, with 0.5% BSA (US sourced) and 0.02% sodium azide | 100 ug |

[Bulk quote request](#)

|                      |  |
|----------------------|--|
| Availability         | 1-3 business days  |
| Species Reactivity   | Human  |
| Predicted Reactivity | Cow, Dog, Mouse, Pig, Rat                                |
| Format               | Antigen affinity purified                                |
| Host                 | Goat   |
| Clonality            | Polyclonal (goat origin)                                 |
| Isotype              | Goat Ig  |
| Purity               | Antigen affinity   |
| Gene ID              | 10365  |
| Applications         | Western Blot : 1-3ug/ml<br>ELISA (peptide) LOD : 1:16000 |
| Limitations          | This KLF2 antibody is available for research use only.   |



Western blot testing of human heart [A] and lung [B] lysates with KLF2 antibody at 1ug/ml. Predicted molecular weight ~37kDa.

## Description

Additional name(s) for this target protein: Kruppel-like factor 2

## Application Notes

Optimal dilution of the KLF2 antibody should be determined by the researcher.

## Immunogen

Amino acids ALSEPILPSFST were used as the immunogen for this KLF2 antibody.

## Storage

Aliquot and store the KLF2 antibody at -20oC.