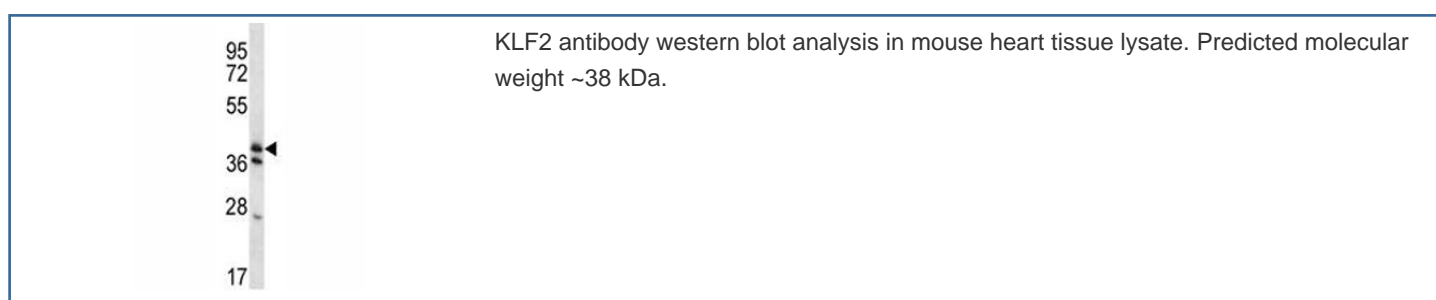


KLF2 Antibody (F44344)

Catalog No.	Formulation	Size
F44344-0.4ML	In 1X PBS, pH 7.4, with 0.09% sodium azide	0.4 ml
F44344-0.08ML	In 1X PBS, pH 7.4, with 0.09% sodium azide	0.08 ml

[Bulk quote request](#)

Availability	1-3 business days
Species Reactivity	Human, Mouse
Format	Antigen affinity purified
Clonality	Polyclonal (rabbit origin)
Isotype	Rabbit Ig
Purity	Antigen affinity
UniProt	Q9Y5W3
Applications	Western Blot : 1:1000
Limitations	This KLF2 antibody is available for research use only.



Description

KLF2 binds to the CACCC box in the beta-globin gene promoter and activates transcription (By similarity). [UniProt]

Application Notes

Titration of the KLF2 antibody may be required due to differences in protocols and secondary/substrate sensitivity.

Immunogen

A portion of amino acids 13-42 from the human protein was used as the immunogen for this KLF2 antibody.

Storage

Aliquot the KLF2 antibody and store frozen at -20oC or colder. Avoid repeated freeze-thaw cycles.