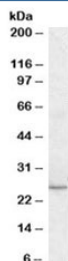


## KLF16 Antibody (R34958)

Catalog No.	Formulation	Size
R34958-100UG	0.5 mg/ml in 1X TBS, pH7.3, with 0.5% BSA (US sourced) and 0.02% sodium azide	100 ug

[Bulk quote request](#)

Availability	1-3 business days
Species Reactivity	Human
Predicted Reactivity	Cow, Dog, Mouse, Rat
Format	Antigen affinity purified
Host	Goat
Clonality	Polyclonal (goat origin)
Isotype	Goat Ig
Purity	Antigen affinity
Gene ID	83855
Applications	Western Blot : 0.3-1ug/ml ELISA (peptide) LOD : 1:32000
Limitations	This KLF16 antibody is available for research use only.



Western blot testing of human heart lysate with KLF16 antibody at 0.3ug/ml. Predicted molecular weight: ~25kDa.

## Description

Additional name(s) for this target protein: Kruppel-like factor 16, DRRF

## Application Notes

Optimal dilution of the KLF16 antibody should be determined by the researcher.

## **Immunogen**

Amino acids PAPSPAPSPAPAGL were used as the immunogen for this KLF16 antibody.

## **Storage**

Aliquot and store the KLF16 antibody at -20oC.