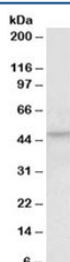


KLF15 Antibody (R36323)

Catalog No.	Formulation	Size
R36323-100UG	0.5 mg/ml in 1X TBS, pH7.3, with 0.5% BSA (US sourced) and 0.02% sodium azide	100 ug

[Bulk quote request](#)

Availability	1-3 business days
Species Reactivity	Human
Format	Antigen affinity purified
Host	Goat
Clonality	Polyclonal (goat origin)
Isotype	Goat Ig
Purity	Antigen affinity
Gene ID	28999
Applications	Western Blot : 0.5-1.5ug/ml ELISA (peptide) LOD : 1:64000
Limitations	This KLF15 antibody is available for research use only.



Western blot testing of human kidney lysate with KLF15 antibody at 0.5ug/ml. Predicted molecular weight: ~44 kDa.

Description

Additional name(s) for this target protein: Kruppel-like factor 15

Application Notes

Optimal dilution of the KLF15 antibody should be determined by the researcher.

Immunogen

Amino acids VDHLLPVDENFSS were used as the immunogen for this KLF15 antibody.

Storage

Aliquot and store the KLF15 antibody at -20oC.