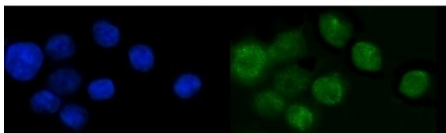


KLF14 Antibody / SP6 / Transcription factor Sp6 (RQ6907)

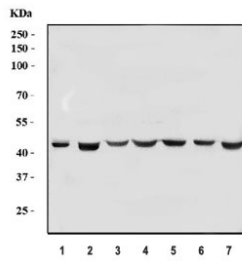
Catalog No.	Formulation	Size
RQ6907	0.5mg/ml if reconstituted with 0.2ml sterile DI water	100 ug

Bulk quote request

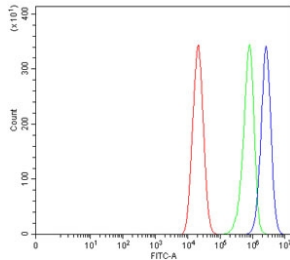
Availability	1-3 business days
Species Reactivity	Human, Mouse, Rat
Format	Antigen affinity purified
Host	Rabbit
Clonality	Polyclonal (rabbit origin)
Isotype	Rabbit IgG
Purity	Antigen affinity purified
Buffer	Lyophilized from 1X PBS with 2% Trehalose
UniProt	Q3SY56
Localization	Nuclear
Applications	Western Blot : 1-2ug/ml Immunofluorescence (FFPE) : 5ug/ml Flow Cytometry : 1-3ug/million cells Direct ELISA : 0.1-0.5ug/ml
Limitations	This KLF14 antibody is available for research use only.



Immunofluorescent staining of FFPE human Caco-2 cells with KLF14 antibody (green) and DAPI nuclear stain (blue). HIER: steam section in pH6 citrate buffer for 20 min.



Western blot testing of 1) human placenta, 2) human Caco-2, 3) human HeLa, 4) rat brain, 5) rat C6, 6) mouse brain and 7) mouse NIH 3T3 cell lysate with KLF14 antibody. Predicted molecular weight ~40 kDa.



Flow cytometry testing of human Caco-2 cells with KLF14 antibody at 1ug/million cells (blocked with goat sera); Red=cells alone, Green=isotype control, Blue= KLF14 antibody.

Description

SP6 belongs to a family of transcription factors that contain 3 classical zinc finger DNA-binding domains consisting of a zinc atom tetrahedrally coordinated by 2 cysteines and 2 histidines (C2H2 motif). These transcription factors bind to GC-rich sequences and related GT and CACCC boxes.

Application Notes

Optimal dilution of the KLF14 antibody should be determined by the researcher.

Immunogen

Recombinant human protein (amino acids S11-S218) was used as the immunogen for the KLF14 antibody.

Storage

After reconstitution, the KLF14 antibody can be stored for up to one month at 4oC. For long-term, aliquot and store at -20oC. Avoid repeated freezing and thawing.