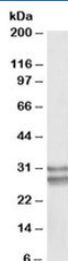


## KLF13 Antibody (R36214)

Catalog No.	Formulation	Size
R36214-100UG	0.5 mg/ml in 1X TBS, pH7.3, with 0.5% BSA (US sourced) and 0.02% sodium azide	100 ug

[Bulk quote request](#)

Availability	1-3 business days
Species Reactivity	Human
Predicted Reactivity	Cow, Mouse, Pig
Format	Antigen affinity purified
Host	Goat
Clonality	Polyclonal (goat origin)
Isotype	Goat Ig
Purity	Antigen affinity
Gene ID	51621
Applications	Western Blot : 0.1-0.3ug/ml ELISA (peptide) LOD : 1:64000
Limitations	This KLF13 antibody is available for research use only.



Western blot testing of human heart lysate with KLF13 antibody at 0.1ug/ml. Predicted molecular weight ~31kDa. The ~28kDa band is likely due to partial proteolysis.

## Description

Additional name(s) for this target protein: Kruppel-like factor 13

## Application Notes

Optimal dilution of the KLF13 antibody should be determined by the researcher.

## **Immunogen**

Amino acids TLPRVEERRDGKDS were used as the immunogen for this KLF13 antibody.

## **Storage**

Aliquot and store the KLF13 antibody at -20oC.