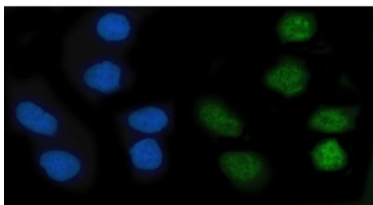


## KLF10 Antibody / Krueppel-like factor 10 / TIEG-1 (RQ7334)

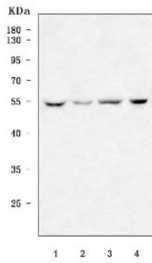
Catalog No.	Formulation	Size
RQ7334	0.5mg/ml if reconstituted with 0.2ml sterile DI water	100 ug

### Bulk quote request

<b>Availability</b>	1-3 business days
<b>Species Reactivity</b>	Human
<b>Format</b>	Antigen affinity purified
<b>Host</b>	Rabbit
<b>Clonality</b>	Polyclonal (rabbit origin)
<b>Isotype</b>	Rabbit IgG
<b>Purity</b>	Antigen affinity purified
<b>Buffer</b>	Lyophilized from 1X PBS with 2% Trehalose
<b>UniProt</b>	Q13118
<b>Localization</b>	Nuclear
<b>Applications</b>	Western Blot : 0.5-1ug/ml Immunofluorescence : 5ug/ml Direct ELISA : 0.1-0.5ug/ml
<b>Limitations</b>	This KLF10 antibody is available for research use only.



Immunofluorescent staining of FFPE human SiHa cells with KLF10 antibody (green) and DAPI nuclear stain (blue). HIER: steam section in pH6 citrate buffer for 20 min.



Western blot testing of human 1) HepG2, 2) Jurkat, 3) HeLa and 4) PC-3 cell lysate with KLF10 antibody. Predicted molecular weight ~53 kDa.

## Description

Krueppel-like factor 10, also called Transforming growth factor-beta-inducible early growth response protein 1 (TIEG-1) is a protein that in humans is encoded by the KLF10 gene. This gene encodes a member of a family of proteins that feature C2H2-type zinc finger domains. The encoded protein is a transcriptional repressor that acts as an effector of transforming growth factor beta signaling. Activity of this protein may inhibit the growth of cancers, particularly pancreatic cancer. Alternative splicing results in multiple transcript variants.

## Application Notes

Optimal dilution of the KLF10 antibody should be determined by the researcher.

## Immunogen

Recombinant human protein (amino acids K36-A471) was used as the immunogen for the KLF10 antibody.

## Storage

After reconstitution, the KLF10 antibody can be stored for up to one month at 4°C. For long-term, aliquot and store at -20°C. Avoid repeated freezing and thawing.