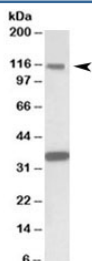


## KIT Antibody (R34610)

Catalog No.	Formulation	Size
R34610-100UG	0.5 mg/ml in 1X TBS, pH7.3, with 0.5% BSA (US sourced) and 0.02% sodium azide	100 ug

[Bulk quote request](#)

Availability	1-3 business days
Species Reactivity	Human
Predicted Reactivity	Cow, Dog, Pig
Format	Antigen affinity purified
Host	Goat
Clonality	Polyclonal (goat origin)
Isotype	Goat Ig
Purity	Antigen affinity
Gene ID	3815
Applications	Western Blot : 1-3ug/ml ELISA (peptide) LOD : 1:128000
Limitations	This KIT antibody is available for research use only.



Western blot testing of human hippocampus lysate with KIT antibody at 1ug/ml. Observed molecular weight: ~120/145kDa (precursor/mature). Both observed bands are blocked by the immunizing peptide.

## Description

Additional name(s) for this target protein: CD117

## Application Notes

Optimal dilution of the KIT antibody should be determined by the researcher.

## **Immunogen**

Amino acids KRDSFICKQEDH were used as the immunogen for this KIT antibody.

## **Storage**

Aliquot and store the KIT antibody at -20oC.