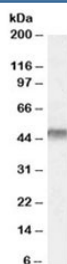


KIR6.2 Antibody (R33115)

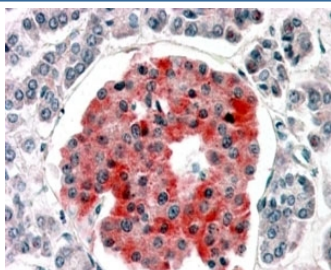
Catalog No.	Formulation	Size
R33115-100UG	0.5 mg/ml in 1X TBS, pH7.3, with 0.5% BSA (US sourced) and 0.02% sodium azide	100 ug

[Bulk quote request](#)

Availability	1-3 business days
Species Reactivity	Human
Format	Antigen affinity purified
Clonality	Polyclonal (goat origin)
Isotype	Goat Ig
Purity	Antigen affinity
Gene ID	3767
Applications	Western Blot : 0.1-0.3ug/ml Immunohistochemistry (FFPE) : 3-5ug/ml ELISA (peptide) LOD : 1:32000
Limitations	This KIR6.2 antibody is available for research use only.



Western blot testing of human muscle lysate with KIR6.2 antibody at 0.1ug/ml. Predicted molecular weight: ~44kDa.



IHC staining of FFPE human pancreas with KIR6.2 antibody at 4ug/ml. HIER: steamed with pH6 citrate buffer, AP-staining.

Description

Additional name(s) for this target protein: Inwardly rectifying potassium channel KIR6.2; potassium inwardly-rectifying channel, subfamily J, member 11 (KCNJ11)

Application Notes

Optimal dilution of the KIR6.2 antibody should be determined by the researcher.

Immunogen

Amino acids AEDPAKPRYRARQ were used as the immunogen for this KIR6.2 antibody.

Storage

Aliquot and store the KIR6.2 antibody at -20oC.