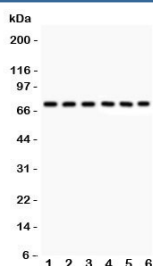


Kininogen 1 Antibody (R31691)

| Catalog No. | Formulation | Size |
|-------------|---|--------|
| R31691 | 0.5mg/ml if reconstituted with 0.2ml sterile DI water | 100 ug |

Bulk quote request

| | |
|---------------------------|---|
| Availability | 1-3 business days |
| Species Reactivity | Human |
| Format | Antigen affinity purified |
| Clonality | Polyclonal (rabbit origin) |
| Isotype | Rabbit IgG |
| Purity | Antigen affinity |
| Buffer | Lyophilized from 1X PBS with 2.5% BSA and 0.025% sodium azide |
| Gene ID | 3827 |
| Applications | Western Blot : 0.5-1ug/ml |
| Limitations | This Kininogen 1 antibody is available for research use only. |



Western blot testing of Kininogen 1 antibody and human samples 1: U87; 2: MCF-7; 3: SKOV; 4: SW620; 5: COLO320; 6: placenta lysate. Predicted/observed molecular weight ~72kDa (HMWK).

Description

Kininogen-1 (KNG1), also known as BDK or bradykinin is a protein that in humans is encoded by the KNG1 gene. It is mapped to 3q27.3. The KNG1 gene uses alternative splicing to generate two different proteins – high molecular weight (HMWK) and low molecular weight (LMWK). HMWK is essential for blood coagulation and assembly of the kallikrein-kinin system. Also, KNG1, a peptide causing numerous physiological effects, is released from HMWK. In contrast to HMWK, LMWK is not involved in blood coagulation. In addition to that, KNG1 is a constituent of the blood coagulation system as well as the kinin-kallikrein system.

Application Notes

The stated application concentrations are suggested starting amounts. Titration of the Kininogen 1 antibody may be required due to differences in protocols and secondary/substrate sensitivity.

Immunogen

Human partial recombinant protein (AA 19-210) was used as the immunogen for this Kininogen 1 antibody.

Storage

After reconstitution, the Kininogen 1 antibody can be stored for up to one month at 4oC. For long-term, aliquot and store at -20oC. Avoid repeated freezing and thawing.