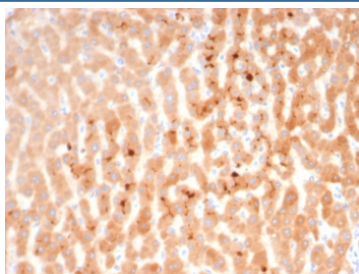


## Kininogen 1 Antibody / KNG1 / Bradykinin [clone KNG1/7423] (V5019)

Catalog No.	Formulation	Size
V5019-100UG	0.2 mg/ml in 1X PBS with 0.1 mg/ml BSA (US sourced), 0.05% sodium azide	100 ug
V5019-20UG	0.2 mg/ml in 1X PBS with 0.1 mg/ml BSA (US sourced), 0.05% sodium azide	20 ug
V5019SAF-100UG	1 mg/ml in 1X PBS; BSA free, sodium azide free	100 ug

[Bulk quote request](#)

<b>Availability</b>	1-3 business days
<b>Species Reactivity</b>	Human
<b>Format</b>	Purified
<b>Host</b>	Mouse
<b>Clonality</b>	Monoclonal (mouse origin)
<b>Isotype</b>	Mouse IgG1, kappa
<b>Clone Name</b>	KNG1/7423
<b>Purity</b>	Protein A/G affinity
<b>UniProt</b>	P01042
<b>Localization</b>	Extracellular, Secreted
<b>Applications</b>	Immunohistochemistry (FFPE) : 1-2ug/ml for 30 min at RT
<b>Limitations</b>	This Kininogen 1 antibody is available for research use only.



IHC staining of FFPE human liver tissue with Kininogen 1 antibody (clone KNG1/7423).  
HIER: boil tissue sections in pH 9 10mM Tris with 1mM EDTA for 20 min and allow to cool before testing.

### Description

Kininogen is a 644 amino acid precursor protein that is expressed by the KNG1 gene and is secreted into blood plasma. Due to alternative splicing events, several Kininogen protein derivatives exist, including Kininogen LC and Kininogen HC,

both of which are produced from the Kininogen precursor and exhibit different functions throughout the cell. Kininogen HC plays an important role in blood coagulation by helping to ensure that prekallikrein and Factor XI (both of which are involved in blood coagulation) are properly situated for interaction with Factor XII. Kininogen HC releases a smaller, active protein known as bradykinin, which plays a role in smooth muscle contraction, induction of hypotension, regulation of blood glucose levels, stimulation of nociceptors and overall mediation of inflammatory responses throughout the cell. In contrast to Kininogen HC, which is involved in blood clotting, Kininogen LC is primarily associated with inhibition of thrombocyte aggregation and also functions as a strong inhibitor of cysteine proteinases.

## Application Notes

Optimal dilution of the Kininogen 1 antibody should be determined by the researcher.

## Immunogen

A recombinant partial protein sequence (within amino acids 1-200) from the human protein was used as the immunogen for the Kininogen 1 antibody.

## Storage

Aliquot the Kininogen 1 antibody and store frozen at -20oC or colder. Avoid repeated freeze-thaw cycles.