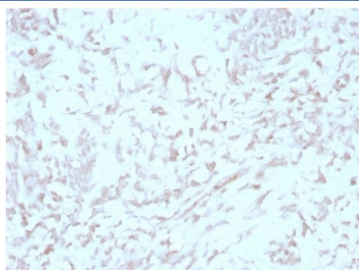


## Kindlin 2 Antibody / KIND2 [clone 3A3] (V8891)

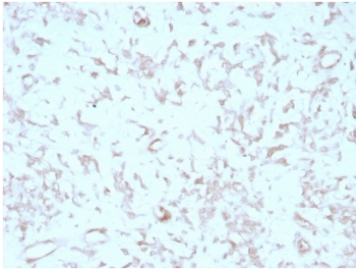
Catalog No.	Formulation	Size
V8891-100UG	0.2 mg/ml in 1X PBS with 0.1 mg/ml BSA (US sourced), 0.05% sodium azide	100 ug
V8891-20UG	0.2 mg/ml in 1X PBS with 0.1 mg/ml BSA (US sourced), 0.05% sodium azide	20 ug
V8891SAF-100UG	1 mg/ml in 1X PBS; BSA free, sodium azide free	100 ug

[Bulk quote request](#)

<b>Availability</b>	1-3 business days
<b>Species Reactivity</b>	Human
<b>Format</b>	Purified
<b>Host</b>	Mouse
<b>Clonality</b>	Monoclonal (mouse origin)
<b>Isotype</b>	Mouse IgG1, kappa
<b>Clone Name</b>	3A3
<b>Purity</b>	Protein A/G affinity
<b>UniProt</b>	Q96AC1
<b>Localization</b>	Cytoplasm
<b>Applications</b>	Immunohistochemistry (FFPE) : 1-2ug/ml Western Blot : 1-2ug/ml
<b>Limitations</b>	This Kindlin 2 antibody is available for research use only.



IHC staining of FFPE human liver tissue with Kindlin 2 antibody (clone 3A3). HIER: boil tissue sections in pH 9 10mM Tris with 1mM EDTA for 20 min and allow to cool before testing.



IHC staining of FFPE human liver tissue with Kindlin 2 antibody (clone 3A3). HIER: boil tissue sections in pH 9 10mM Tris with 1mM EDTA for 20 min and allow to cool before testing.

## Description

Kindlin-2 (also known as Mig-2 and KIND2) is an important component of cell-extracellular matrix adhesion. Kindlin-2 binds integrins and is involved in ECM adhesion, actin assembly and cell shape modulation.

## Application Notes

Optimal dilution of the Kindlin-2 antibody should be determined by the researcher.

## Immunogen

A portion of amino acids 218-486 was used as the immunogen for the Kindlin 2 antibody.

## Storage

Aliquot the Kindlin 2 antibody and store frozen at -20oC or colder. Avoid repeated freeze-thaw cycles.