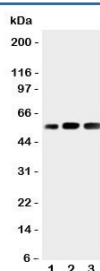


## KIN17 Antibody (R31362)

Catalog No.	Formulation	Size
R31362	0.5mg/ml if reconstituted with 0.2ml sterile DI water	100 ug

[Bulk quote request](#)

<b>Availability</b>	1-3 business days
<b>Species Reactivity</b>	Human, Mouse, Rat
<b>Format</b>	Antigen affinity purified
<b>Host</b>	Rabbit
<b>Clonality</b>	Polyclonal (rabbit origin)
<b>Isotype</b>	Rabbit IgG
<b>Purity</b>	Antigen affinity
<b>Buffer</b>	Lyophilized from 1X PBS with 2.5% BSA and 0.025% sodium azide/thimerosal
<b>UniProt</b>	O60870
<b>Applications</b>	Western Blot : 0.5-1ug/ml
<b>Limitations</b>	This KIN17 antibody is available for research use only.



Western blot testing of KIN17 antibody and Lane 1: rat skeletal muscle; 2: human placenta; 3: rat testis tissue lysate. Predicted molecular weight ~45kDa.

## Description

DNA/RNA-binding protein KIN17, also known as BTCD, is a protein that in humans is encoded by the KIN gene. This gene is mapped to 10p14. The protein encoded by this gene is a nuclear protein that forms intranuclear foci during proliferation and is redistributed in the nucleoplasm during the cell cycle. Short-wave ultraviolet light provokes the relocalization of the protein, suggesting its participation in the cellular response to DNA damage. Originally selected based on protein-binding with RecA antibodies, the mouse protein presents a limited similarity with a functional domain of the bacterial RecA protein, a characteristic shared by this human ortholog. Alternative splicing of this gene results in multiple transcript variants.

## Application Notes

The stated application concentrations are suggested starting amounts. Titration of the KIN17 antibody may be required due to differences in protocols and secondary/substrate sensitivity.

## Immunogen

An amino acid sequence from the N-terminus of human KIN (ESHQRQLLLASENPQQF) was used as the immunogen for this KIN17 antibody (100% homologous in human, mouse and rat).

## Storage

After reconstitution, the KIN17 antibody can be stored for up to one month at 4oC. For long-term, aliquot and store at -20oC. Avoid repeated freezing and thawing.