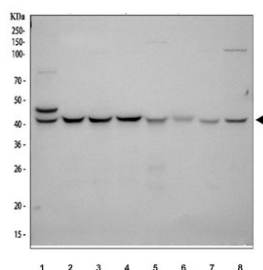


KIN Antibody / KIN17 (R31828)

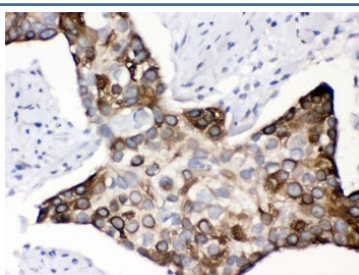
Catalog No.	Formulation	Size
R31828	0.5mg/ml if reconstituted with 0.2ml sterile DI water	100 ug

Bulk quote request

Availability	1-3 business days
Species Reactivity	Human, Mouse, Rat
Format	Antigen affinity purified
Host	Rabbit
Clonality	Polyclonal (rabbit origin)
Isotype	Rabbit IgG
Purity	Antigen affinity
Buffer	Lyophilized from 1X PBS with 2.5% BSA and 0.025% sodium azide
UniProt	O60870
Applications	Western Blot : 0.1-0.5ug/ml Immunohistochemistry (FFPE) : 0.5-1ug/ml
Limitations	This KIN antibody is available for research use only.



Western blot testing of 1) human HeLa, 2) human MCF7, 3) human 293T, 4) human HepG2, 5) rat RH35, 6) rat NRK, 7) mouse HEPA1-6 and 8) mouse NIH 3T3 cell lysate with KIN antibody. Predicted molecular weight ~45 kDa.



IHC testing of FFPE human squamous cell carcinoma of the esophagus with KIN antibody. HIER: Boil the paraffin sections in pH 6, 10mM citrate buffer for 20 minutes and allow to cool prior to staining.

Description

DNA/RNA-binding protein KIN17, also known as BTCD or KIN, is a protein that in humans is encoded by the KIN gene. This gene is mapped to 10p14. The protein encoded by this gene is a nuclear protein that forms intranuclear foci during proliferation and is redistributed in the nucleoplasm during the cell cycle. Short-wave ultraviolet light provokes the relocalization of the protein, suggesting its participation in the cellular response to DNA damage. Originally selected based on protein-binding with RecA antibodies, the mouse protein presents a limited similarity with a functional domain of the bacterial RecA protein, a characteristic shared by this human ortholog. Alternative splicing of this gene results in multiple transcript variants.

Application Notes

Optimal dilution of the KIN antibody should be determined by the researcher.

Immunogen

Amino acids 3-202 of human KIN17 were used as the immunogen for the KIN antibody.

Storage

After reconstitution, the KIN antibody can be stored for up to one month at 4°C. For long-term, aliquot and store at -20°C. Avoid repeated freezing and thawing.