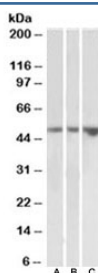


## KIM-1 Antibody (R36185)

Catalog No.	Formulation	Size
R36185-100UG	0.5 mg/ml in 1X TBS, pH7.3, with 0.5% BSA (US sourced) and 0.02% sodium azide	100 ug

[Bulk quote request](#)

Availability	1-3 business days
Species Reactivity	Human
Format	Antigen affinity purified
Clonality	Polyclonal (goat origin)
Isotype	Goat Ig
Purity	Antigen affinity
Gene ID	26762
Applications	Western Blot : 2-4ug/ml ELISA (peptide) LOD : 1:16000
Limitations	This KIM-1 antibody is available for research use only.



Western blot testing of kidney [A], testis [B] and uterus [C] lysates with KIM-1 antibody at 2ug/ml. Predicted molecular weight~39 kDa, routinely observed at ~55 kDa (Ref 1), and a heavily glycosylated mature form at ~100 kDa (Ref 2).

## Description

Additional name(s) for this target protein: Kidney injury molecule 1, HAVCR1, hepatitis A virus cellular receptor 1

## Application Notes

Optimal dilution of the KIM-1 antibody should be determined by the researcher.

## Immunogen

Amino acids THVTYRKDTRYK were used as the immunogen for this KIM-1 antibody. The amino acid sequence used as

immunogen is from the extracellular portion of the protein.

## Storage

Aliquot and store the KIM-1 antibody at -20oC.

## References (2)