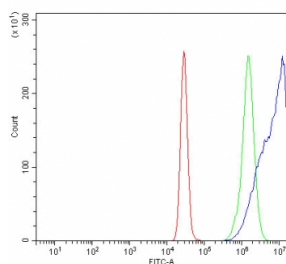


KIF5A Antibody / Kinesin heavy chain isoform 5A (RQ8104)

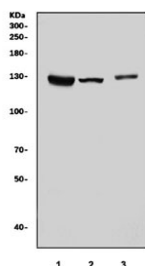
Catalog No.	Formulation	Size
RQ8104	0.5mg/ml if reconstituted with 0.2ml sterile DI water	100 ug

Bulk quote request

Availability	1-3 business days
Species Reactivity	Human, Mouse, Rat
Format	Antigen affinity purified
Clonality	Polyclonal (rabbit origin)
Isotype	Rabbit IgG
Purity	Antigen affinity purified
Buffer	Lyophilized from 1X PBS with 2% Trehalose
UniProt	Q12840
Applications	Western Blot : 0.5-1ug/ml Flow Cytometry : 1-3ug/million cells Direct ELISA : 0.1-0.5ug/ml
Limitations	This KIF5A antibody is available for research use only.



Flow cytometry testing of human K562 cells with KIF5A antibody at 1ug/million cells (blocked with goat sera); Red=cells alone, Green=isotype control, Blue= KIF5A antibody.



Western blot testing of 1) human K562, 2) rat brain and 3) mouse brain tissue lysate with KIF5A antibody. Predicted molecular weight ~117 kDa.

Description

Kinesin heavy chain isoform 5A is a protein that in humans is encoded by the KIF5A gene. This gene encodes a member of the kinesin family of proteins. Members of this family are part of a multisubunit complex that functions as a microtubule motor in intracellular organelle transport. Mutations in this gene cause autosomal dominant spastic paraplegia 10.

Application Notes

Optimal dilution of the KIF5A antibody should be determined by the researcher.

Immunogen

E. coli-derived recombinant human protein (amino acids E374-S1032) was used as the immunogen for the KIF5A antibody.

Storage

After reconstitution, the KIF5A antibody can be stored for up to one month at 4oC. For long-term, aliquot and store at -20oC. Avoid repeated freezing and thawing.